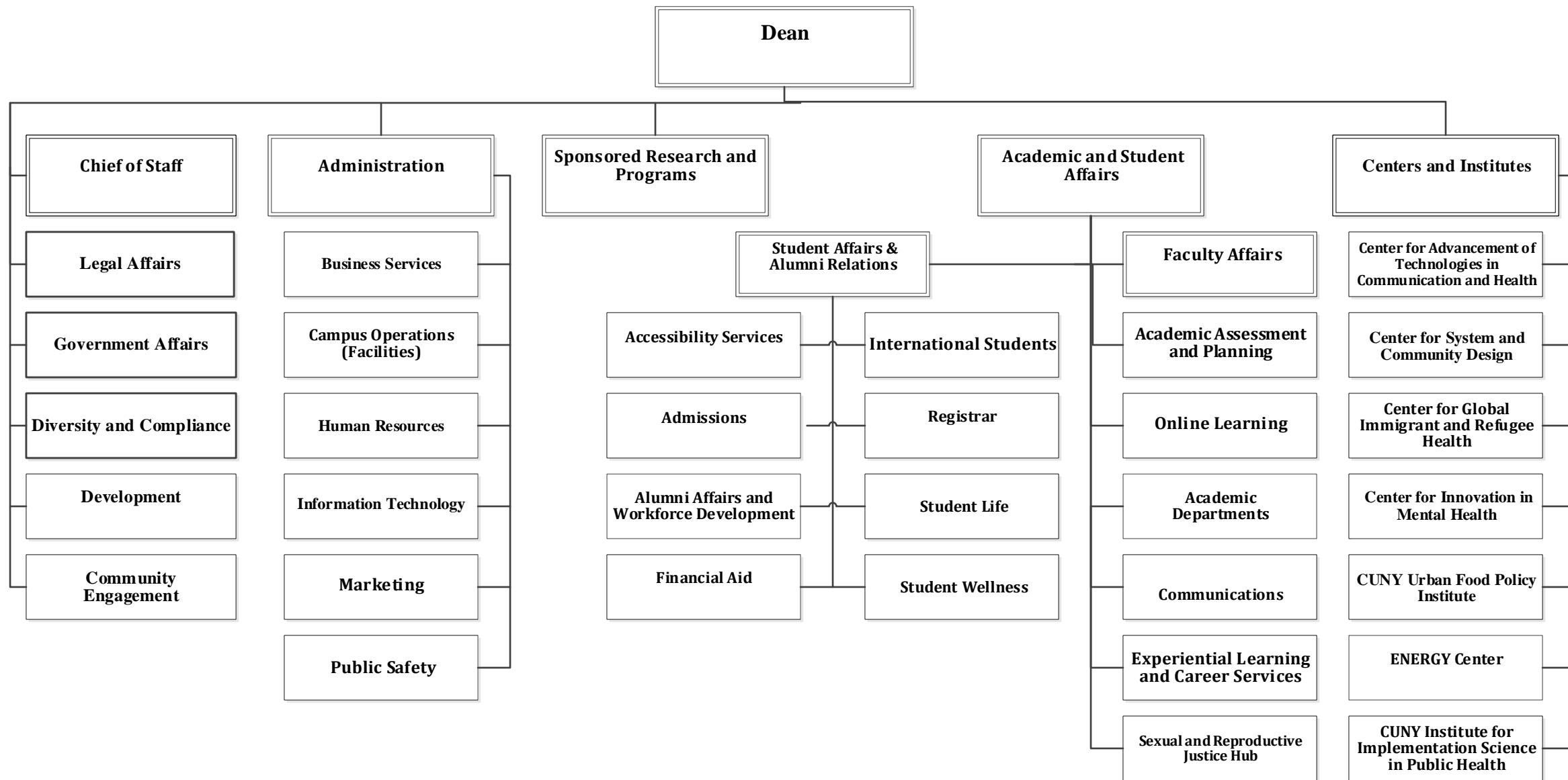
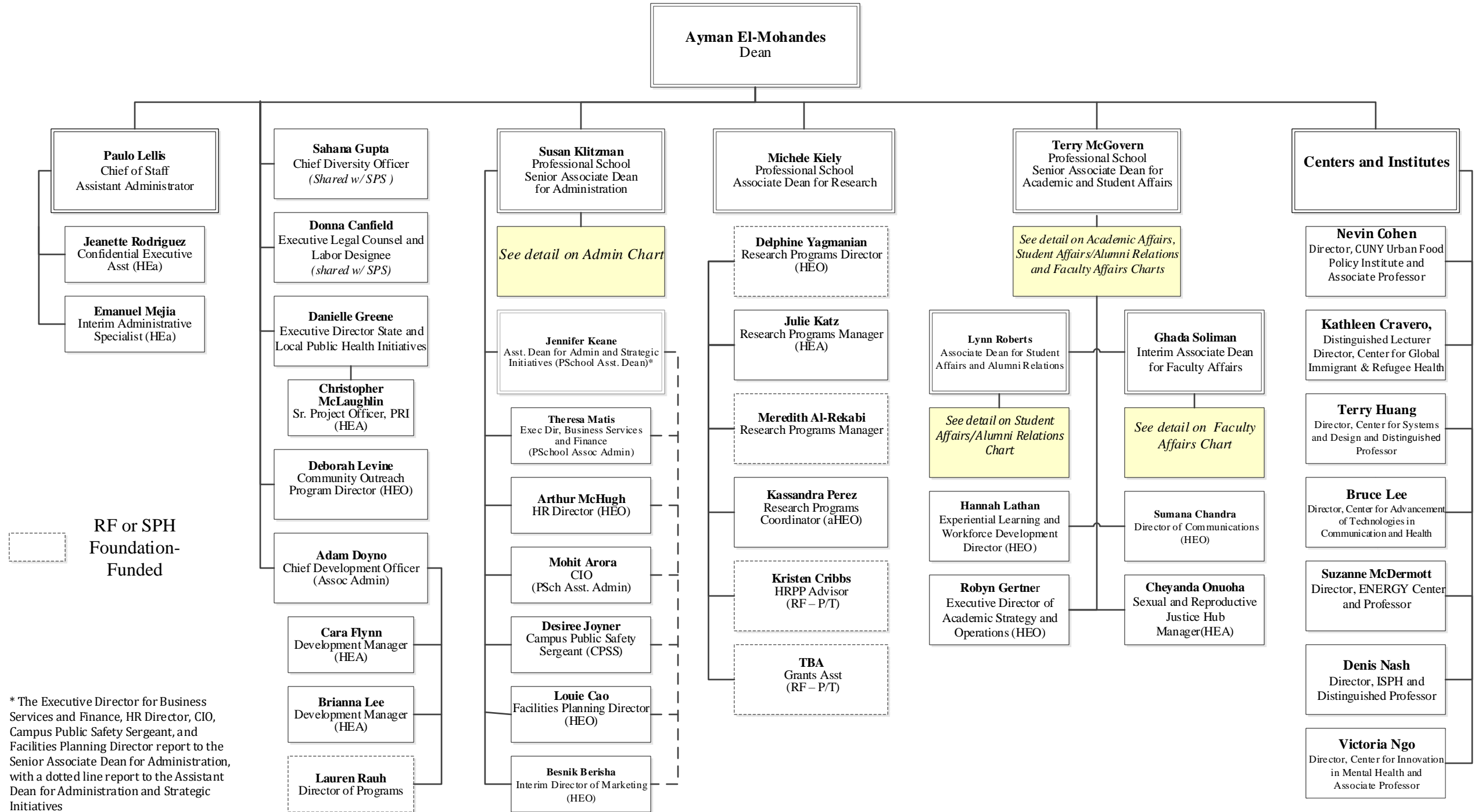


CUNY Graduate School of Public Health and Health Policy - Table of Organization – 2/1/2025



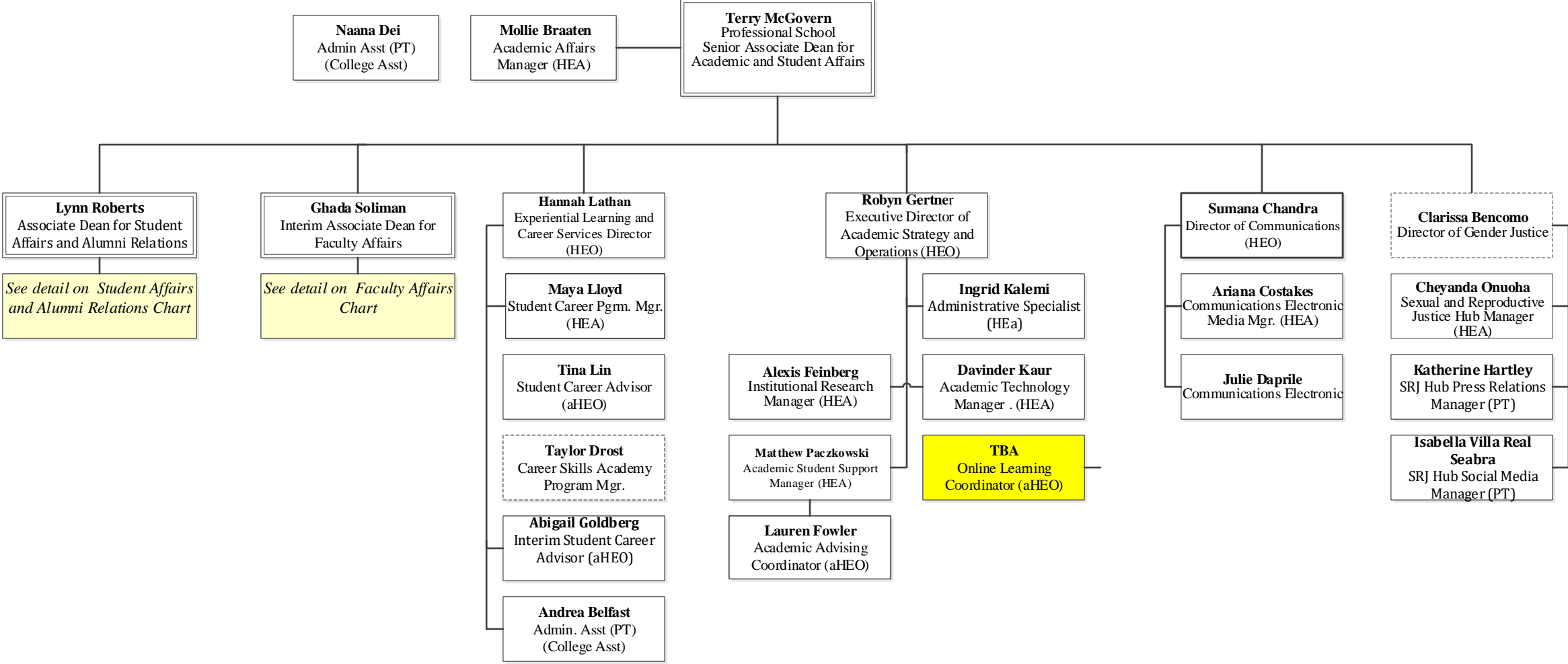
CUNY Graduate School of Public Health and Health Policy Table of Organization
2/1/2025



RF or SPH
Foundation-
Funded

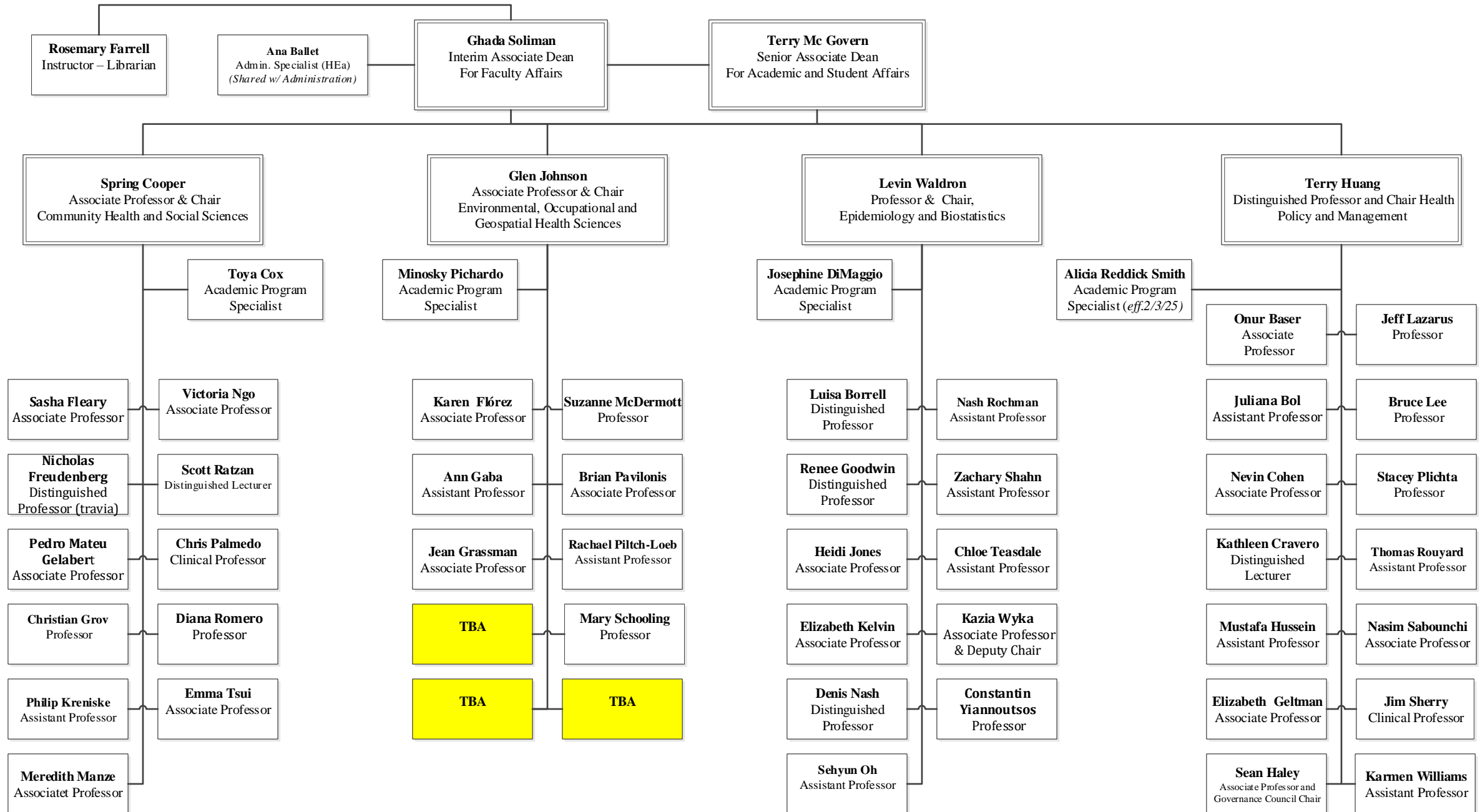
* The Executive Director for Business Services and Finance, HR Director, CIO, Campus Public Safety Sergeant, and Facilities Planning Director report to the Senior Associate Dean for Administration, with a dotted line report to the Assistant Dean for Administration and Strategic Initiatives

**CUNY Graduate School of Public Health and Health Policy
Academic Affairs
Table of Organization
2/1/2025**



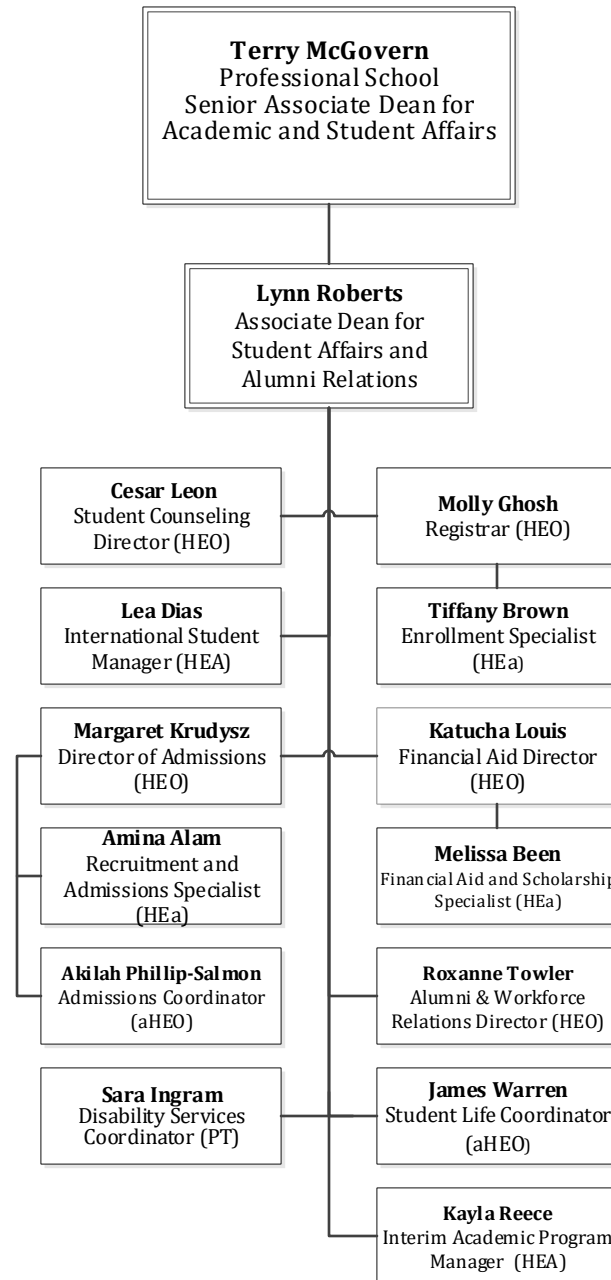
☐ RF or SPH
Foundation-
Funded

**CUNY Graduate School of Public Health and Health Policy
Faculty Affairs - Table of Organization – FT Faculty and Staff
2/1/2025**

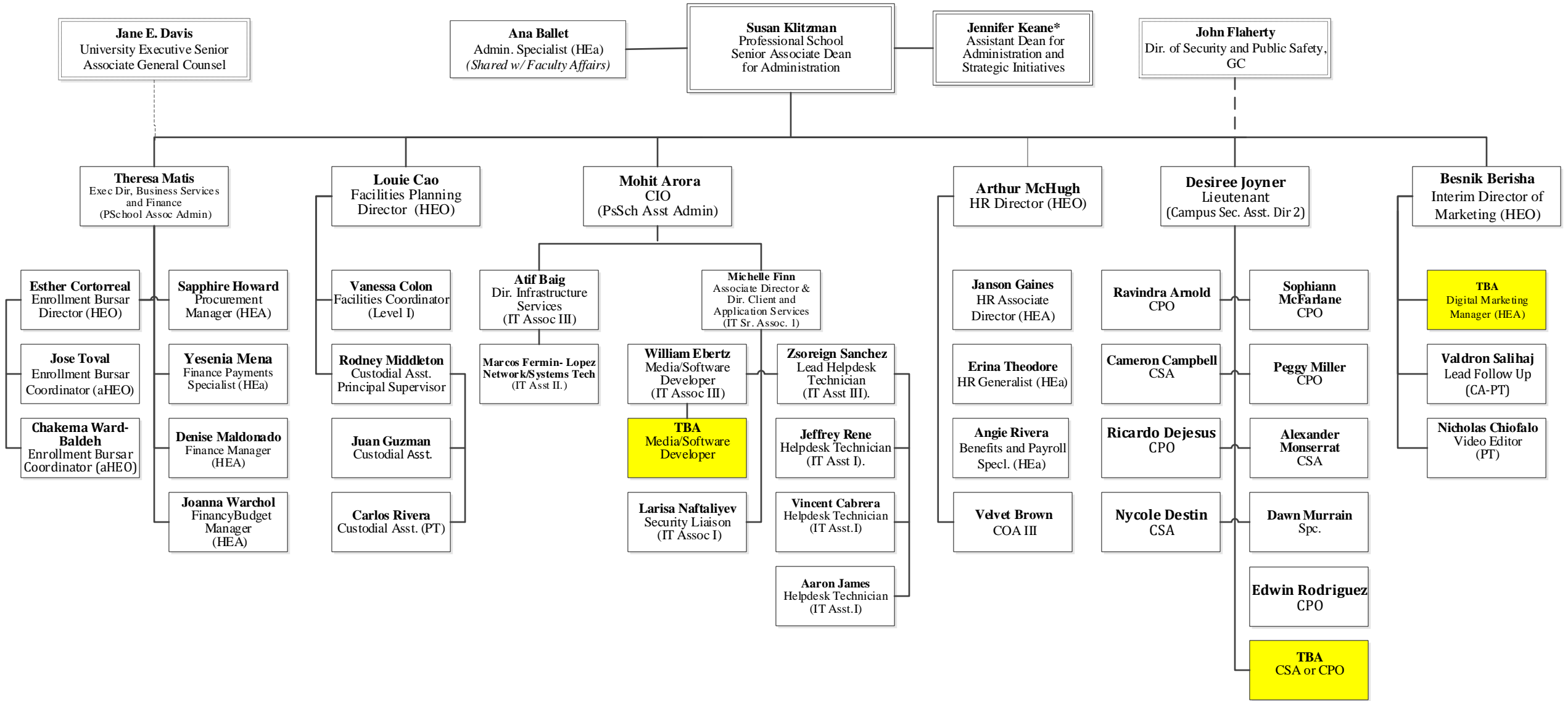


*Excludes Research Faculty who are not affiliated with Academic Departments

CUNY Graduate School of Public Health and Health Policy
Student Affairs and Alumni Relations
Table of Organization – FT Faculty and Staff
2/1/2025

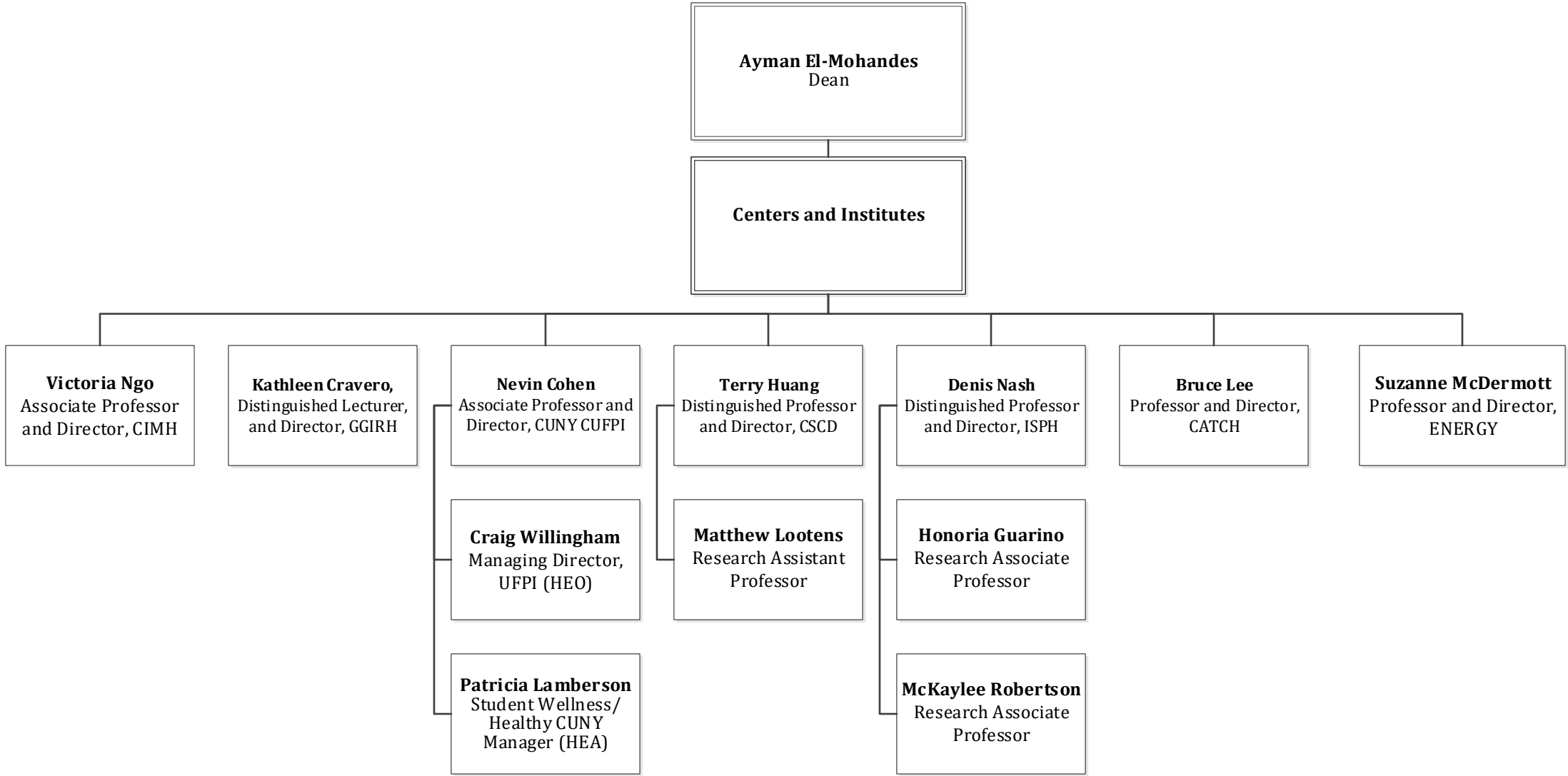


**CUNY Graduate School of Public Health and Health Policy
Administrative Services Table of Organization – Staff
2/1/2025**



* The Executive Director for Business Services and Finance, HR Director, CIO, Campus Public Safety Sergeant, and Facilities Planning Director report to the Senior Associate Dean for Administration, with a dotted line report to the Assistant Dean for Administration and Strategic Initiatives

**CUNY Graduate School of Public Health and Health Policy
Centers and Institutes - Table of Organization -
FT Tax-Levy Faculty and Staff
2/1/2025**



CIMH: Center for Innovation in Mental Health
 CGIRG: Center for Global, Immigrant and Refugee Health
 CUFPI: CUNY Urban Food Policy Institute
 CSCD: Center for Systems and Community Design
 ISPH: Institute for Implementation Science in Public Health
 CATCH: Center for Advancement of Technologies in Communication and Health
 ENERGY: Environmental Justice to Enrich and Engage NYC

**CUNY Graduate School of Public Health and Health Policy
Centers and Institutes - Table of Organization -
FT Tax-Levy Faculty and Staff
2/1/2025**

