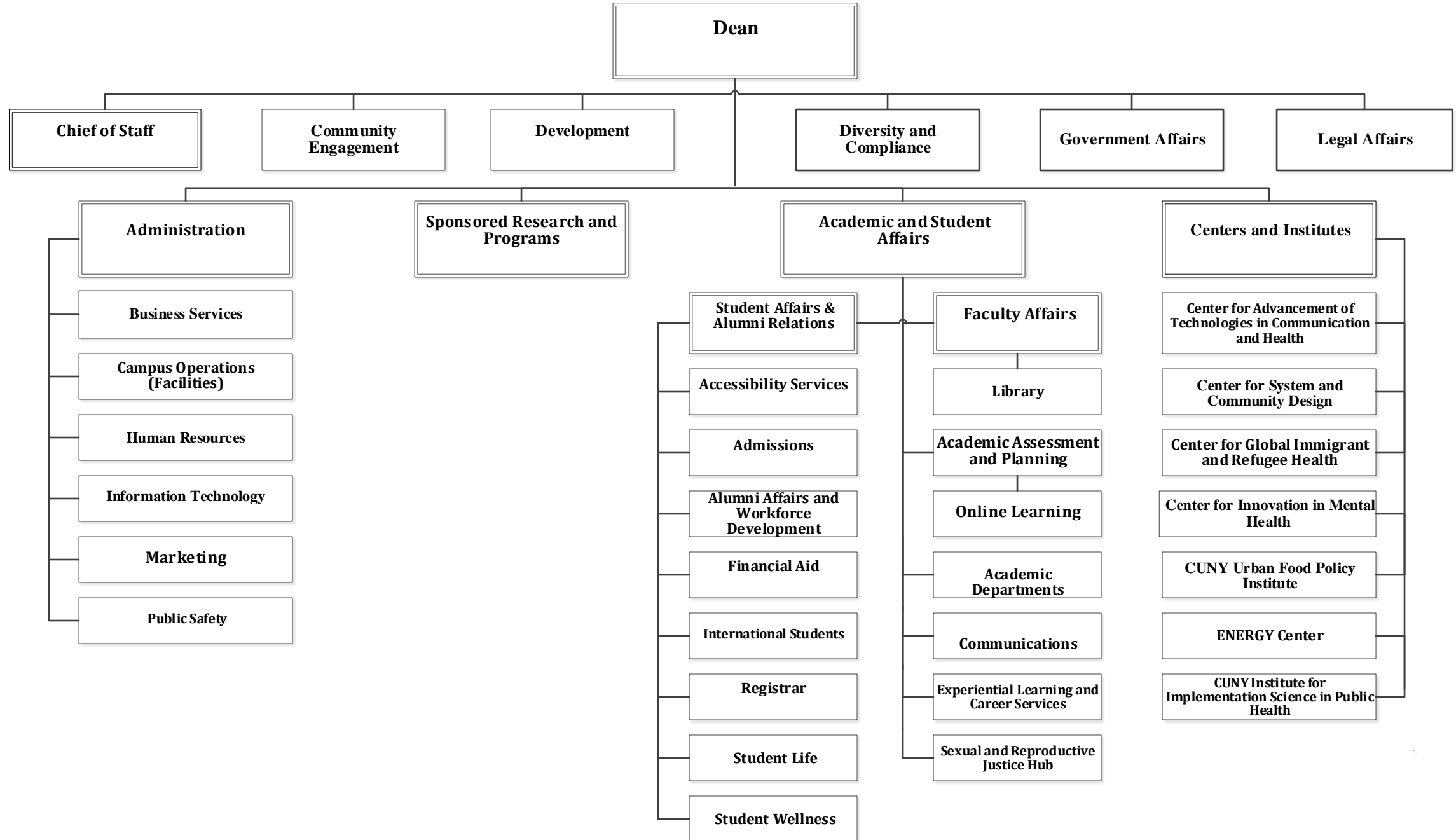
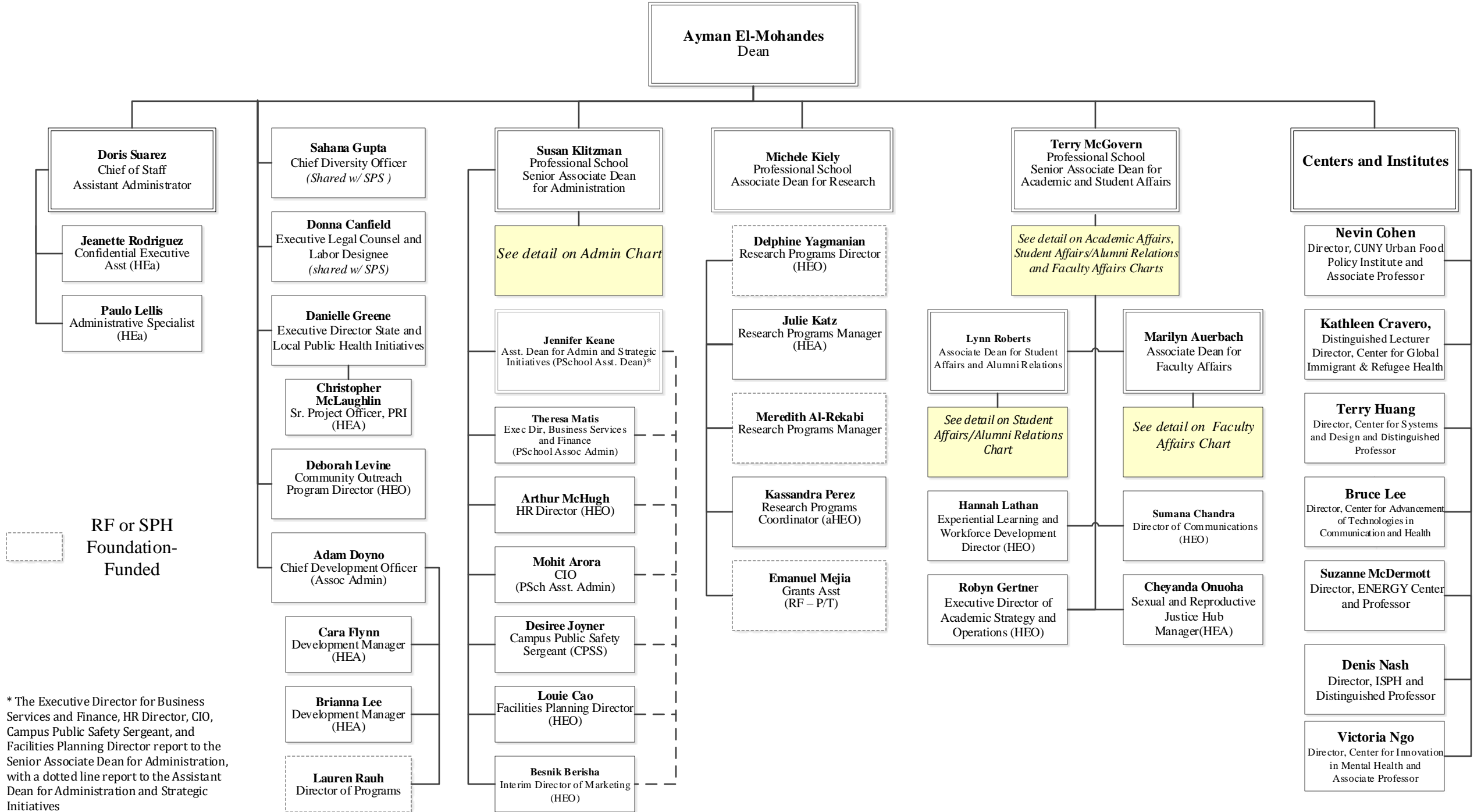


# CUNY Graduate School of Public Health and Health Policy - Table of Organization – 12/1/2024

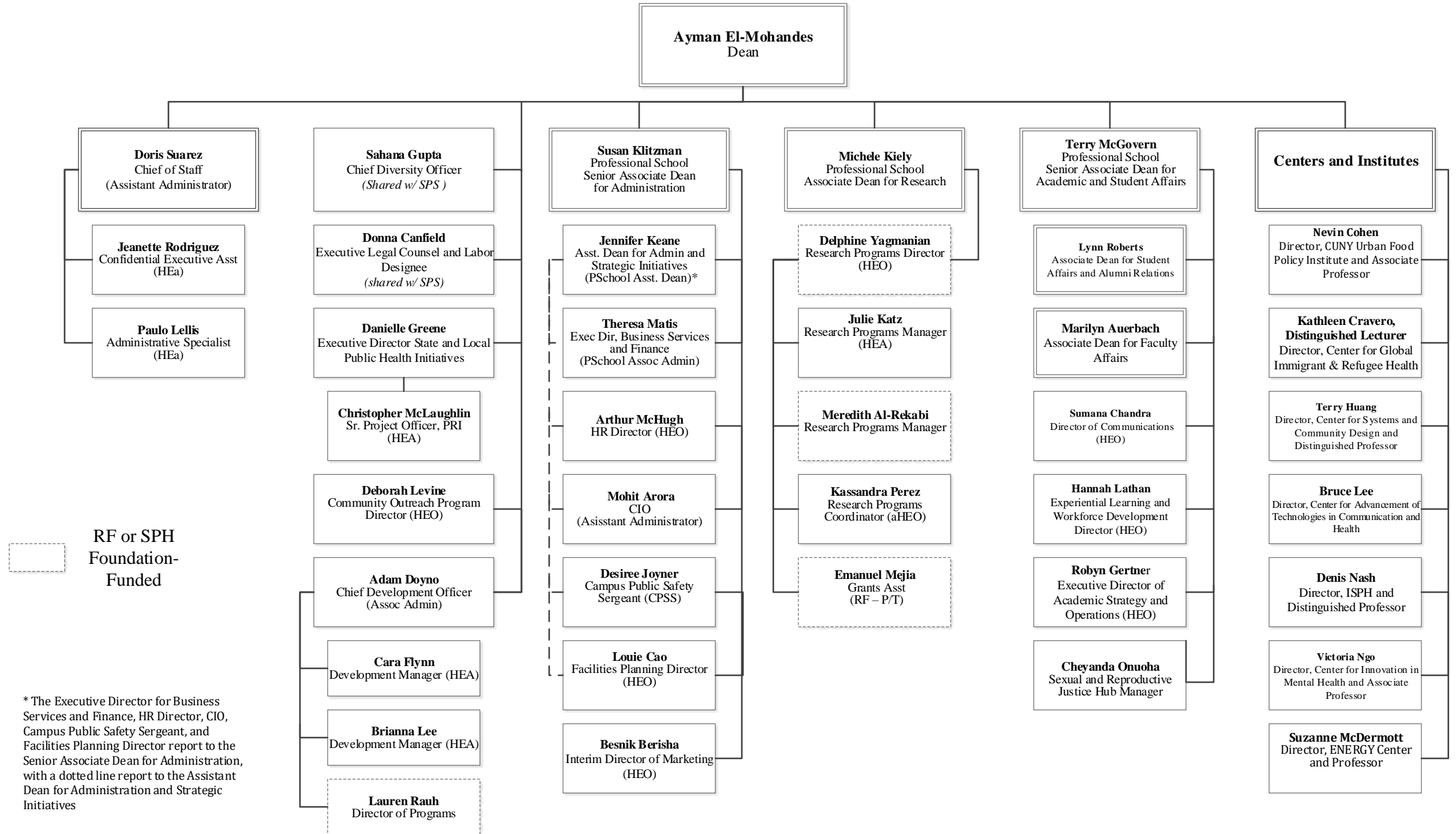


**CUNY Graduate School of Public Health and Health Policy Table of Organization**  
**12/1/2024**



\* The Executive Director for Business Services and Finance, HR Director, CIO, Campus Public Safety Sergeant, and Facilities Planning Director report to the Senior Associate Dean for Administration, with a dotted line report to the Assistant Dean for Administration and Strategic Initiatives

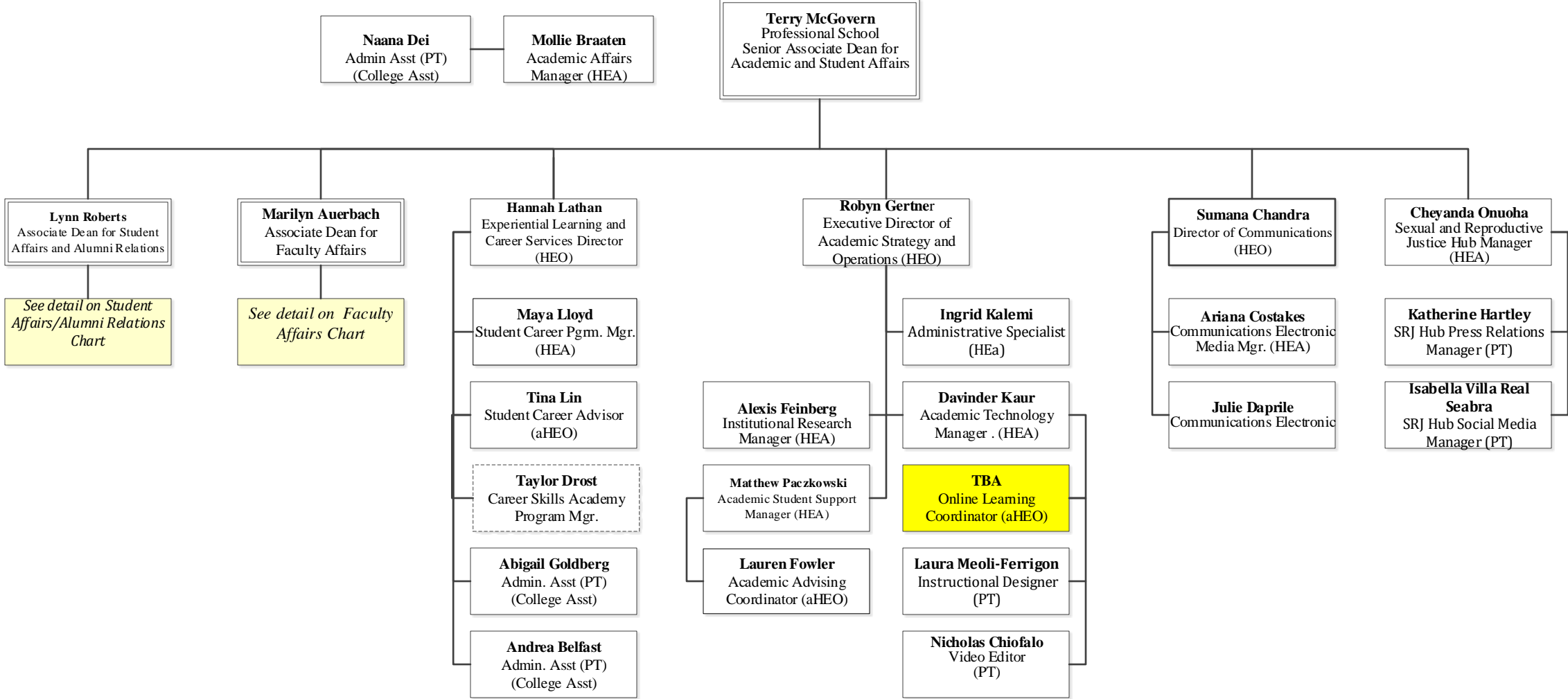
**CUNY Graduate School of Public Health and Health Policy: Office of the Dean Table of Organization 12/1/24**



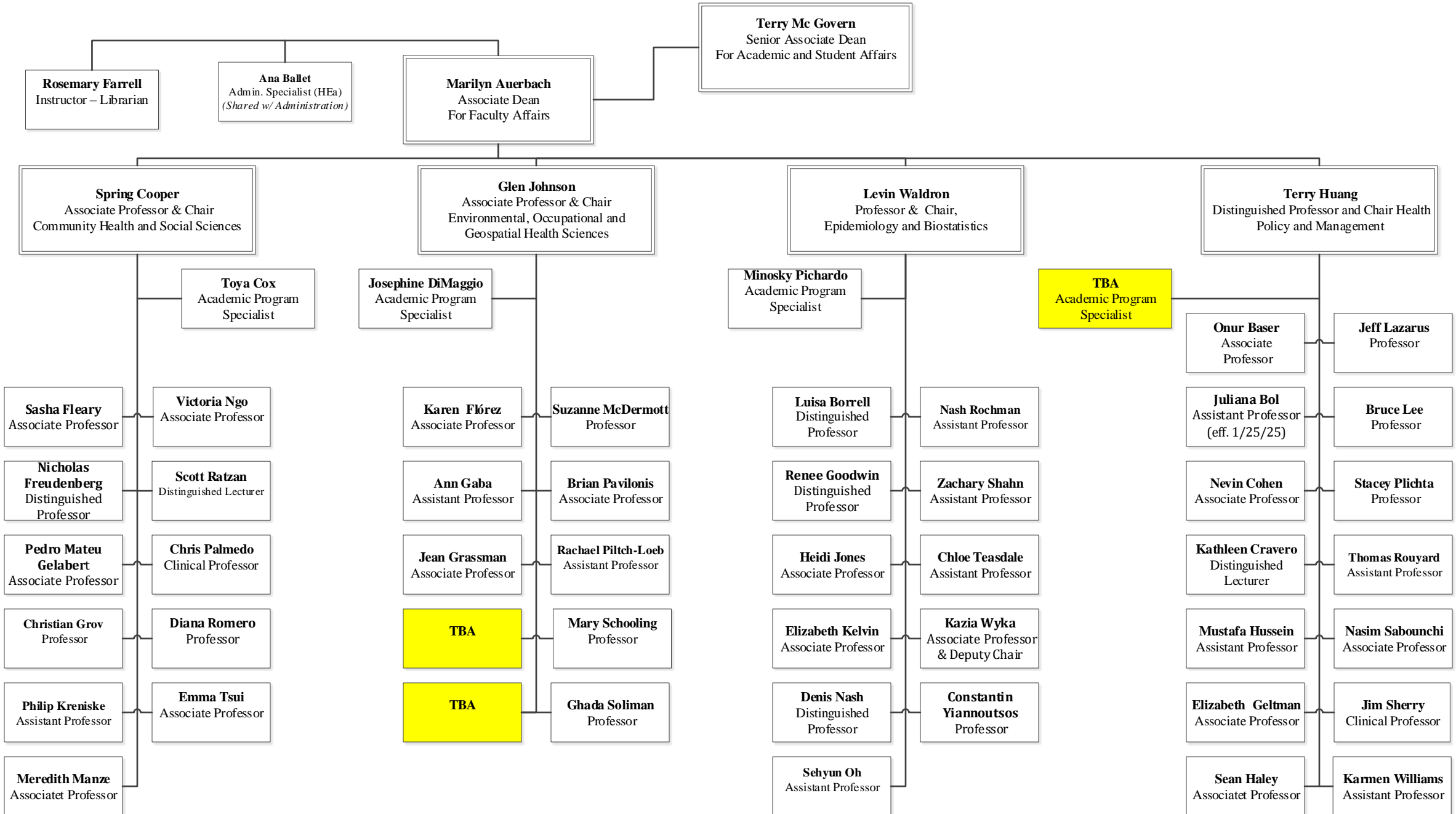
RF or SPH  
Foundation-  
Funded

\* The Executive Director for Business Services and Finance, HR Director, CIO, Campus Public Safety Sergeant, and Facilities Planning Director report to the Senior Associate Dean for Administration, with a dotted line report to the Assistant Dean for Administration and Strategic Initiatives

**CUNY Graduate School of Public Health and Health Policy**  
**Academic Affairs**  
**Table of Organization**  
**12/1/2024**

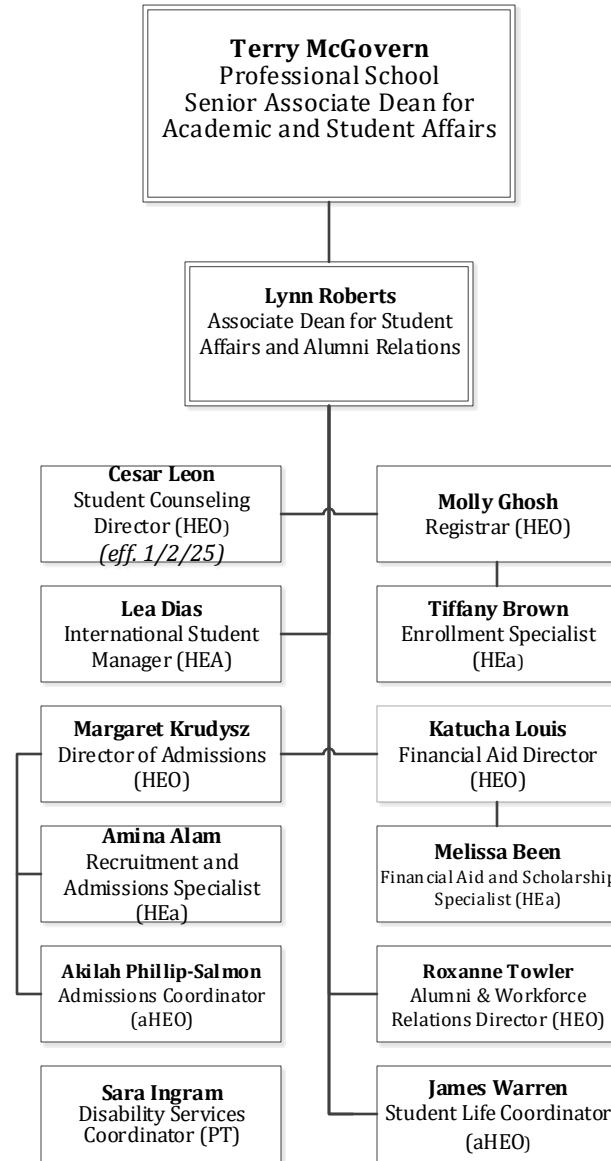


**CUNY Graduate School of Public Health and Health Policy  
Faculty Affairs - Table of Organization – FT Faculty and Staff  
12/1/2024**

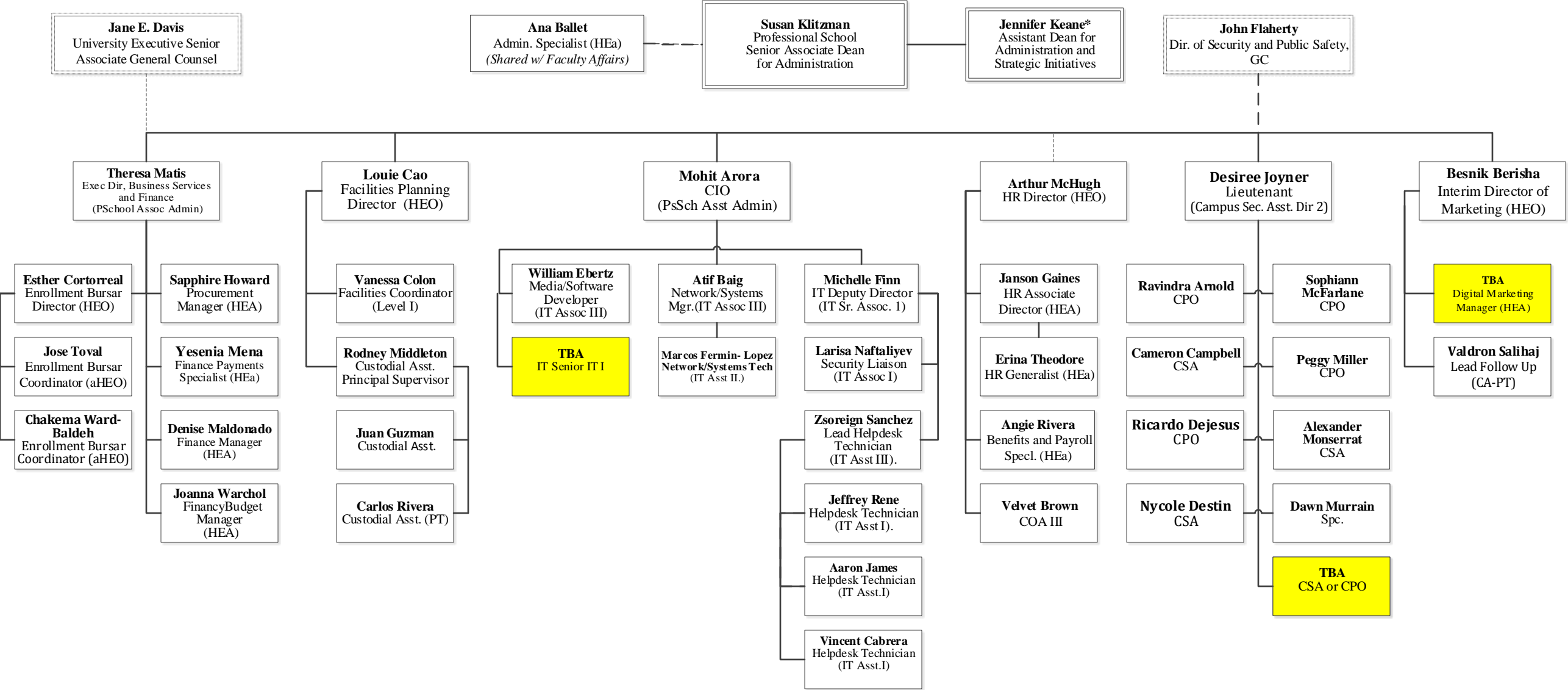


\*Excludes Research Faculty who are not affiliated with Academic Departments

**CUNY Graduate School of Public Health and Health Policy**  
**Student Affairs and Alumni Relations**  
**Table of Organization – FT Faculty and Staff**  
**12/1/ 2024**

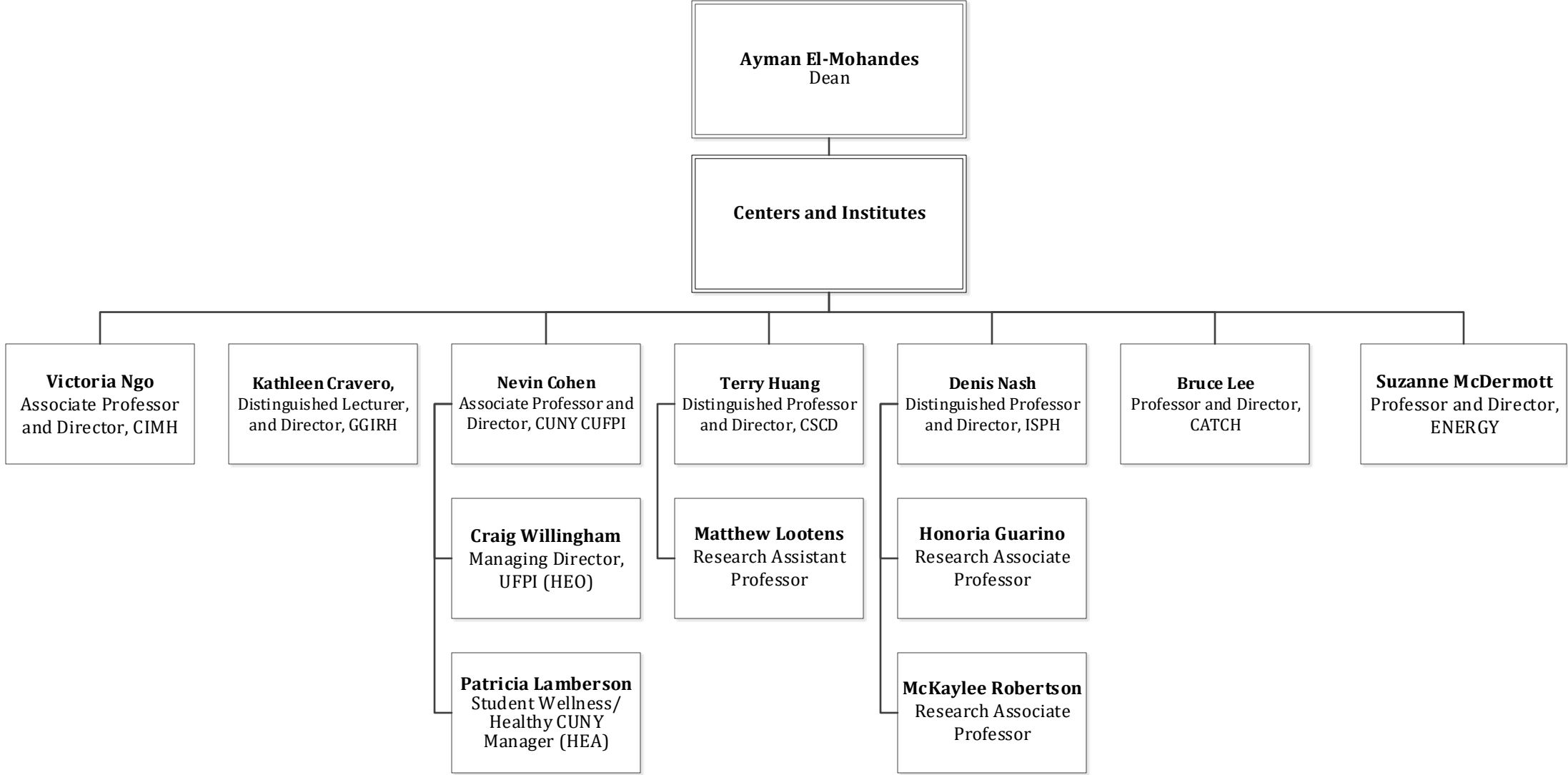


**CUNY Graduate School of Public Health and Health Policy  
Administrative Services Table of Organization – Staff  
12/1/2024**



\* The Executive Director for Business Services and Finance, HR Director, CIO, Campus Public Safety Sergeant, and Facilities Planning Director report to the Senior Associate Dean for Administration, with a dotted line report to the Assistant Dean for Administration and Strategic Initiatives

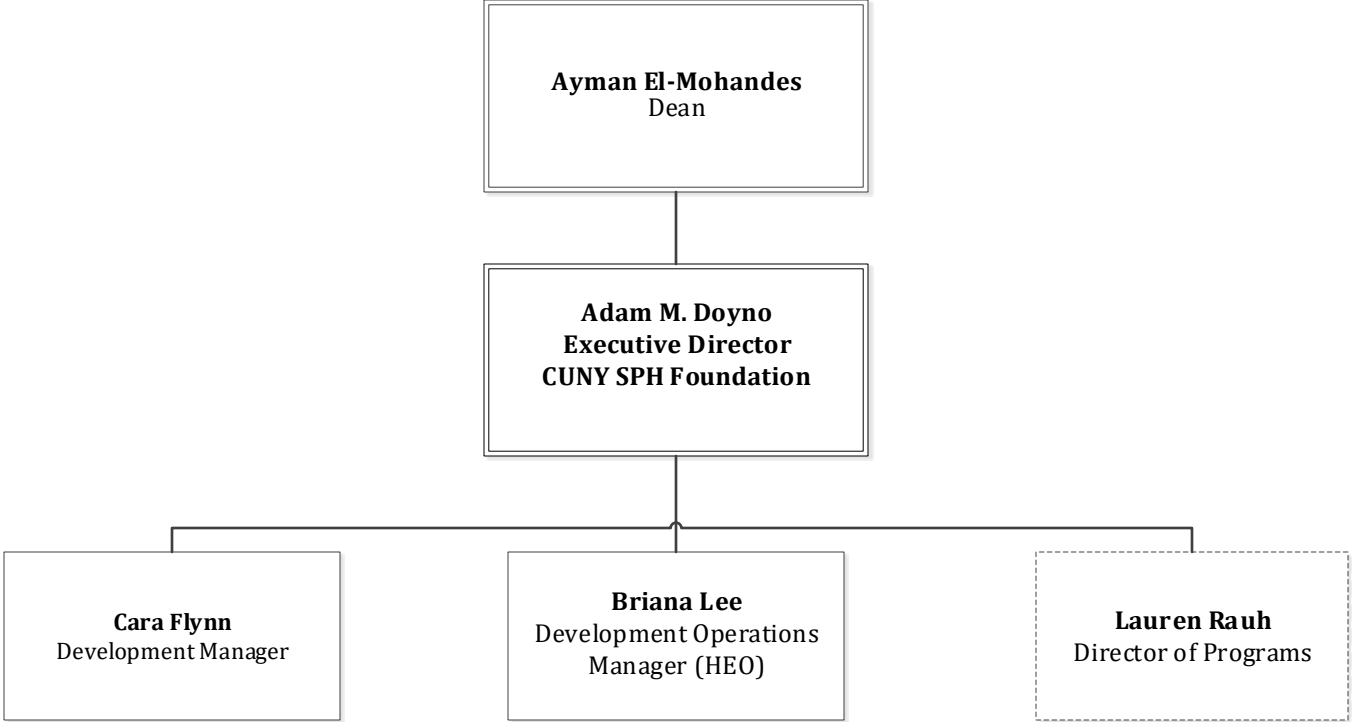
**CUNY Graduate School of Public Health and Health Policy  
Centers and Institutes – Table of Organization –  
FT Tax-Levy Faculty and Staff  
12/1/2024**



CIMH: Center for Innovation in Mental Health  
 CGIRG: Center for Global, Immigrant and Refugee Health  
 CUFPI: CUNY Urban Food Policy Institute  
 CSCD: Center for Systems and Community Design  
 ISPH: Institute for Implementation Science in Public Health  
 CATCH: Center for Advancement of Technologies in Communication and Health  
 ENERGY: Environmental Justice to Enrich and Engage NYC



**CUNY Graduate School of Public Health and Health Policy  
Centers and Institutes - Table of Organization -  
FT Tax-Levy Faculty and Staff  
12/1/2024**



\*and Executive Director of State and Local  
Public Health Initiatives