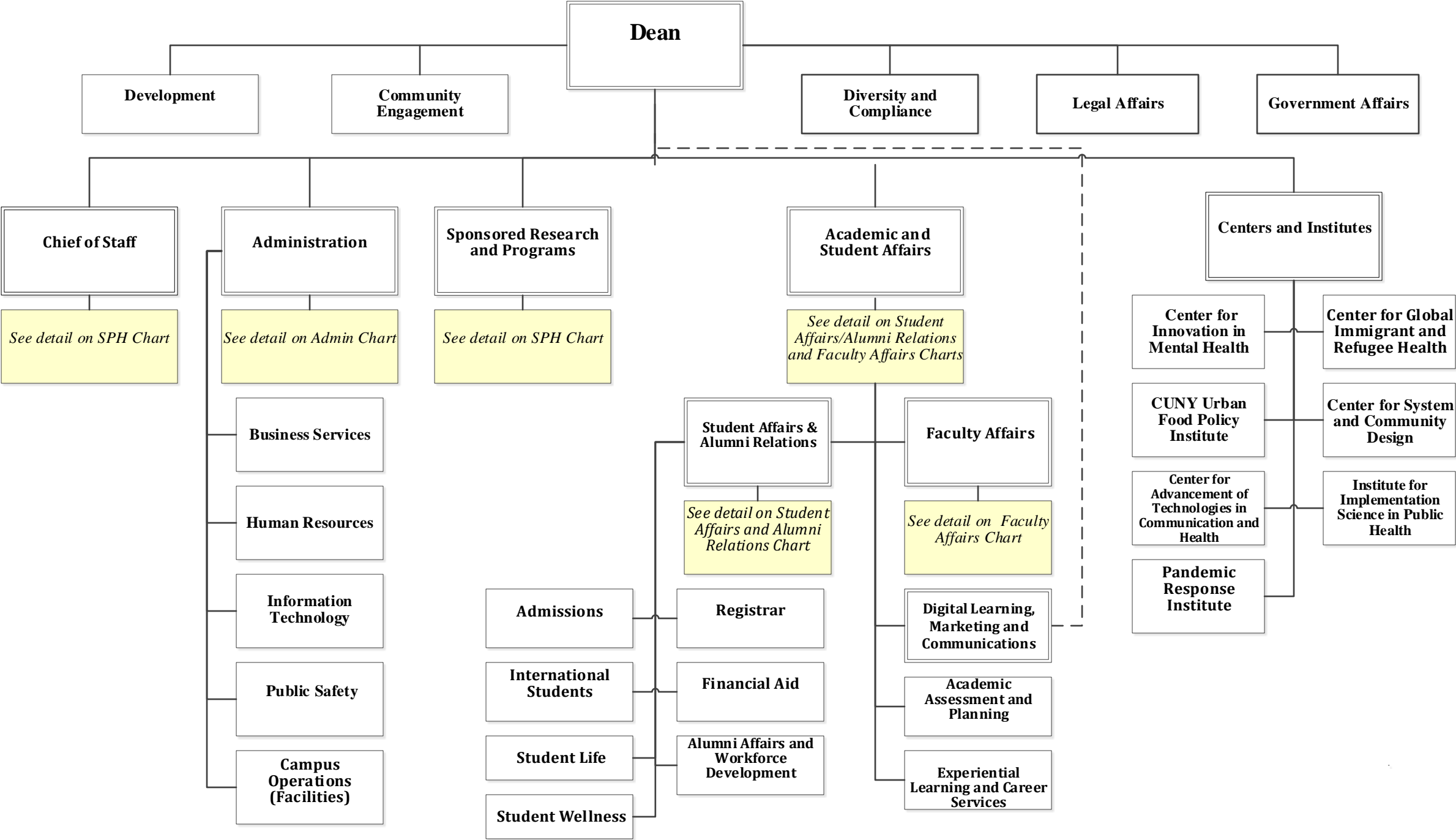
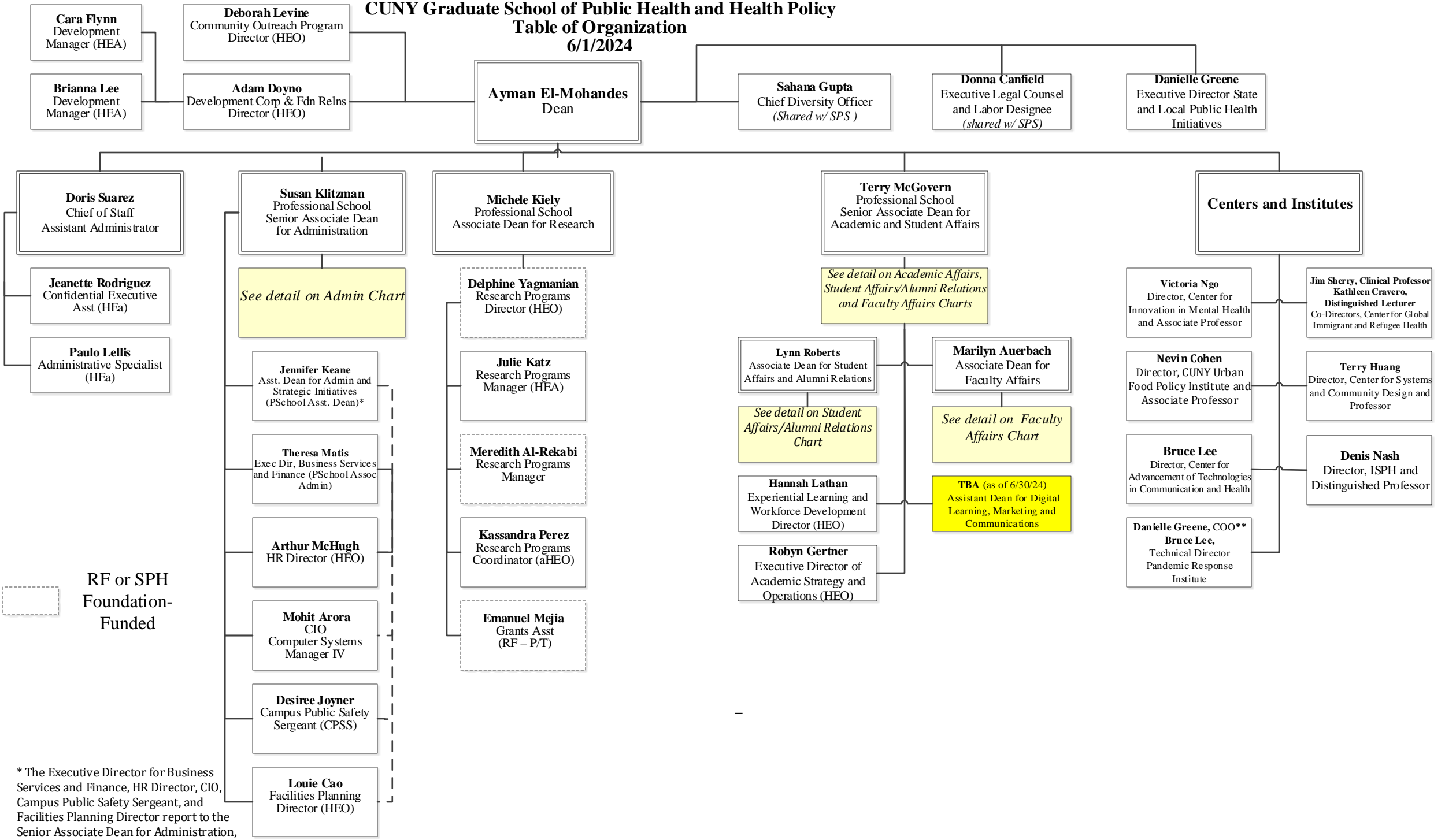


# CUNY Graduate School of Public Health and Health Policy - Table of Organization – 6/1/2024

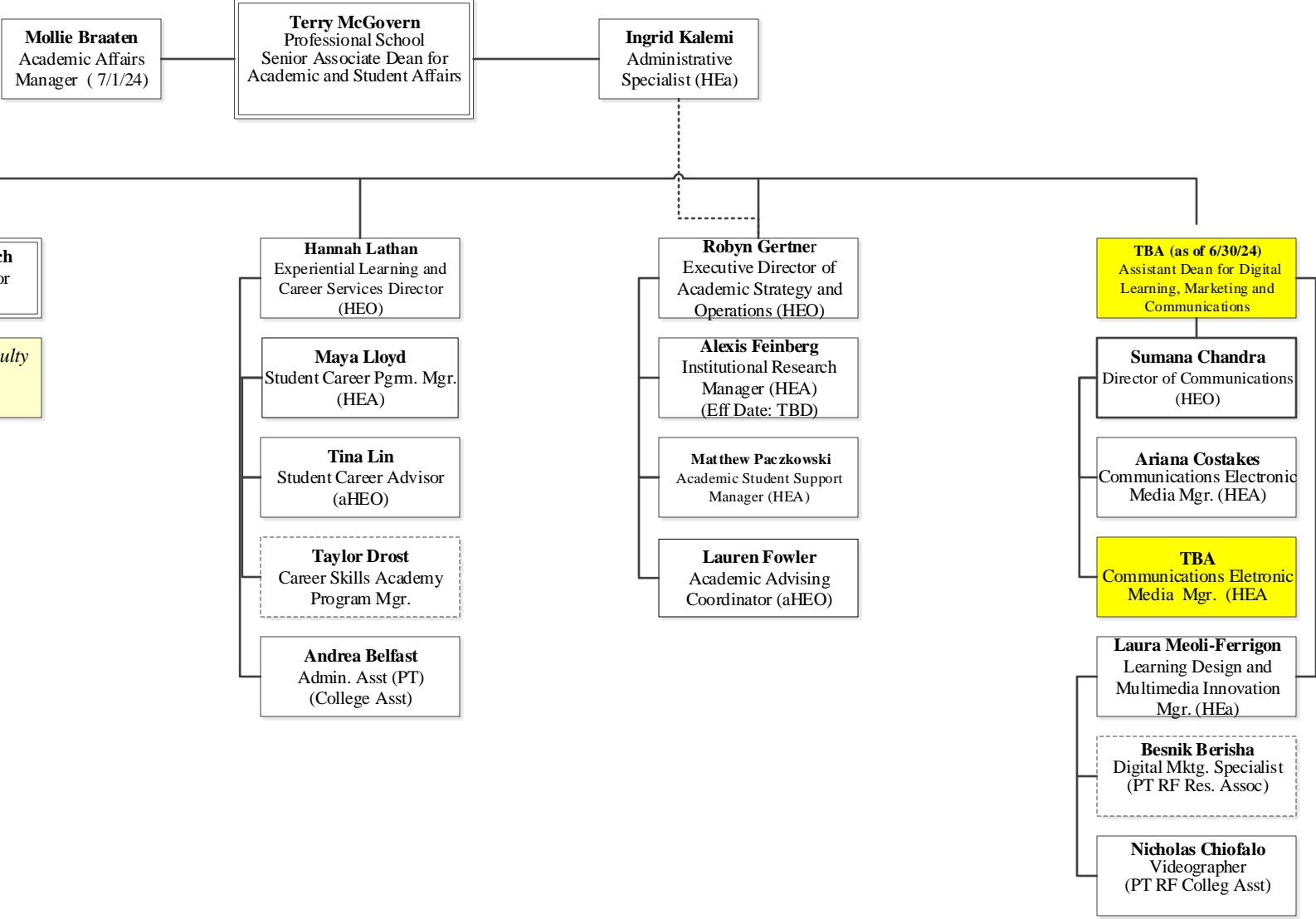


**CUNY Graduate School of Public Health and Health Policy**  
**Table of Organization**  
**6/1/2024**



\* The Executive Director for Business Services and Finance, HR Director, CIO, Campus Public Safety Sergeant, and Facilities Planning Director report to the Senior Associate Dean for Administration, with a dotted line report to the Assistant Dean for Administration and Strategic Initiatives

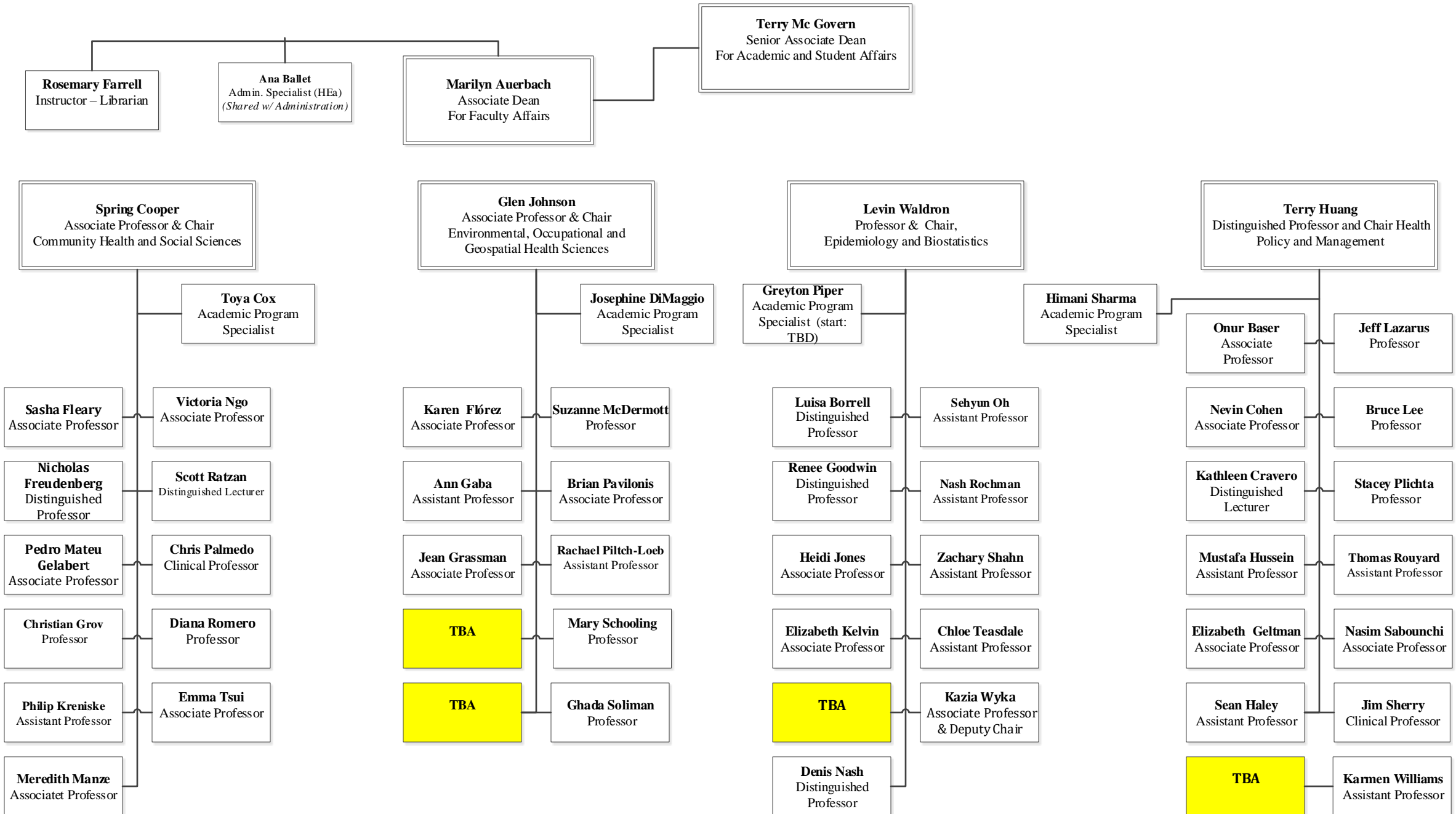
**CUNY Graduate School of Public Health and Health Policy  
Academic Affairs  
Table of Organization  
6/1/2024**



RF or SPH  
Foundation-  
Funded

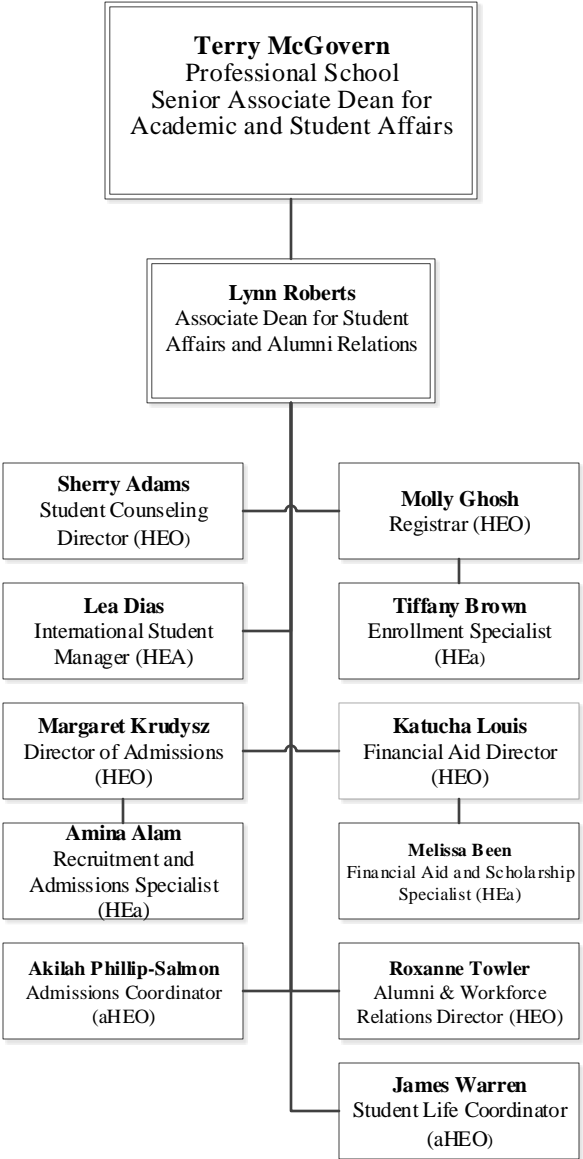
\*The Executive Director for Business Services and Finance, HR Director, CIO, Campus Public Safety Sergeant, and Facilities Planning Director report to the Senior Associate Dean for Administration, with a dotted line report to the Assistant Dean for Administration and Strategic Initiatives

**CUNY Graduate School of Public Health and Health Policy  
Faculty Affairs - Table of Organization – FT Faculty and Staff  
6/1/2024**

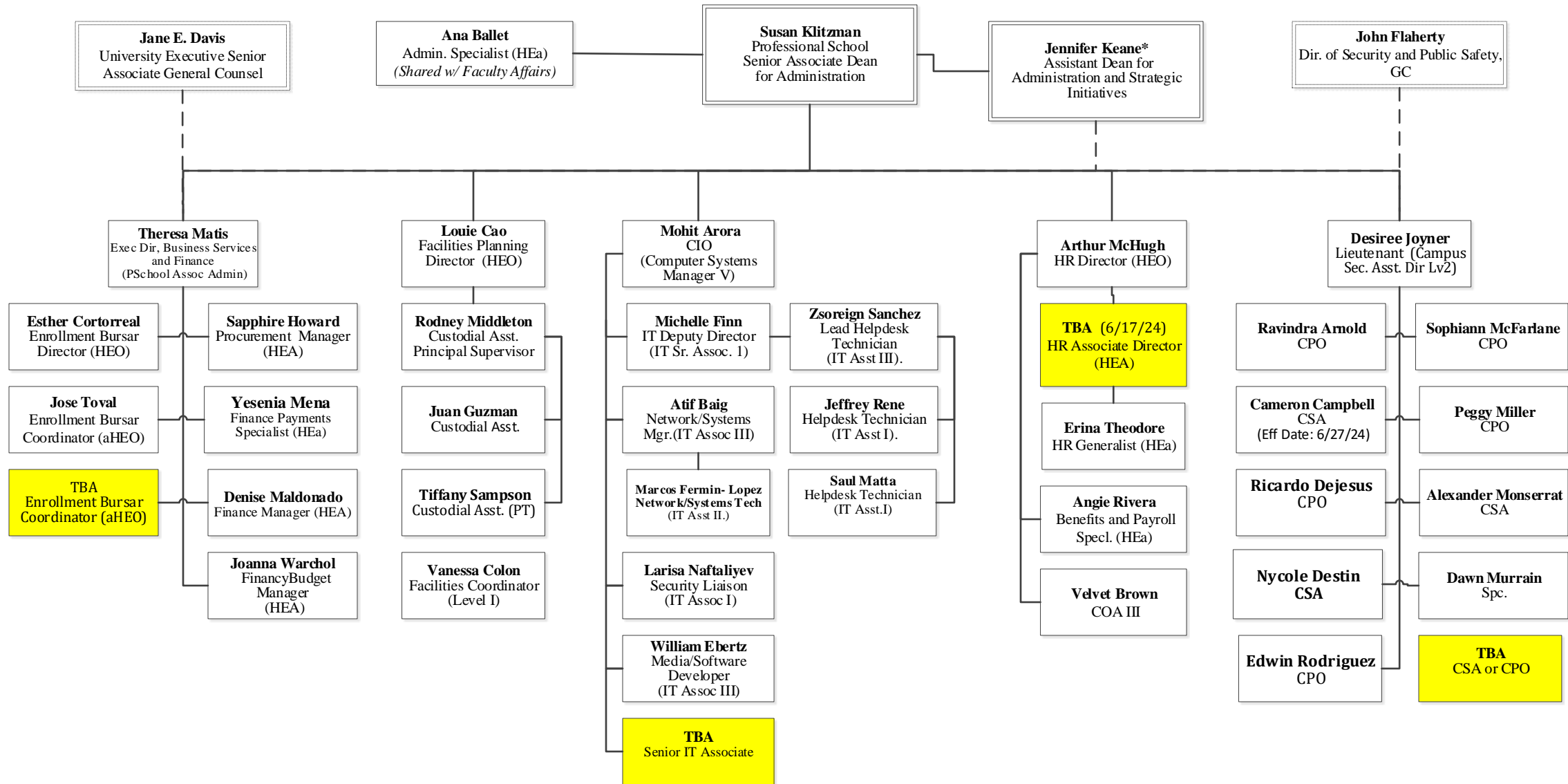


\*Excludes Research Faculty who are not affiliated with Academic Departments

**CUNY Graduate School of Public Health and Health Policy**  
**Student Affairs and Alumni Relations**  
**Table of Organization – FT Faculty and Staff**  
**6/1/ 2024**

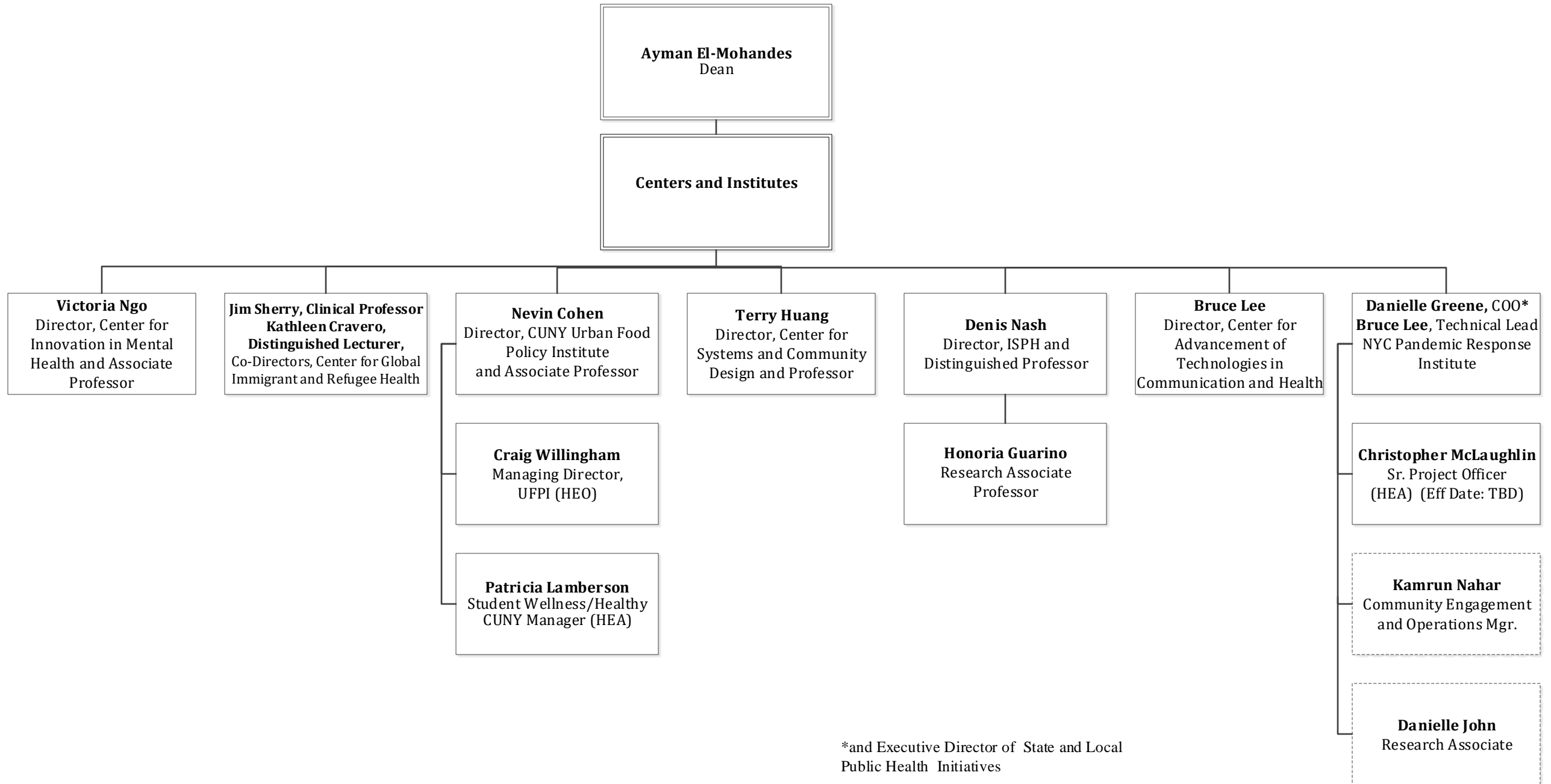


**CUNY Graduate School of Public Health and Health Policy  
Administrative Services  
Table of Organization – FT Staff  
6/1/2024**

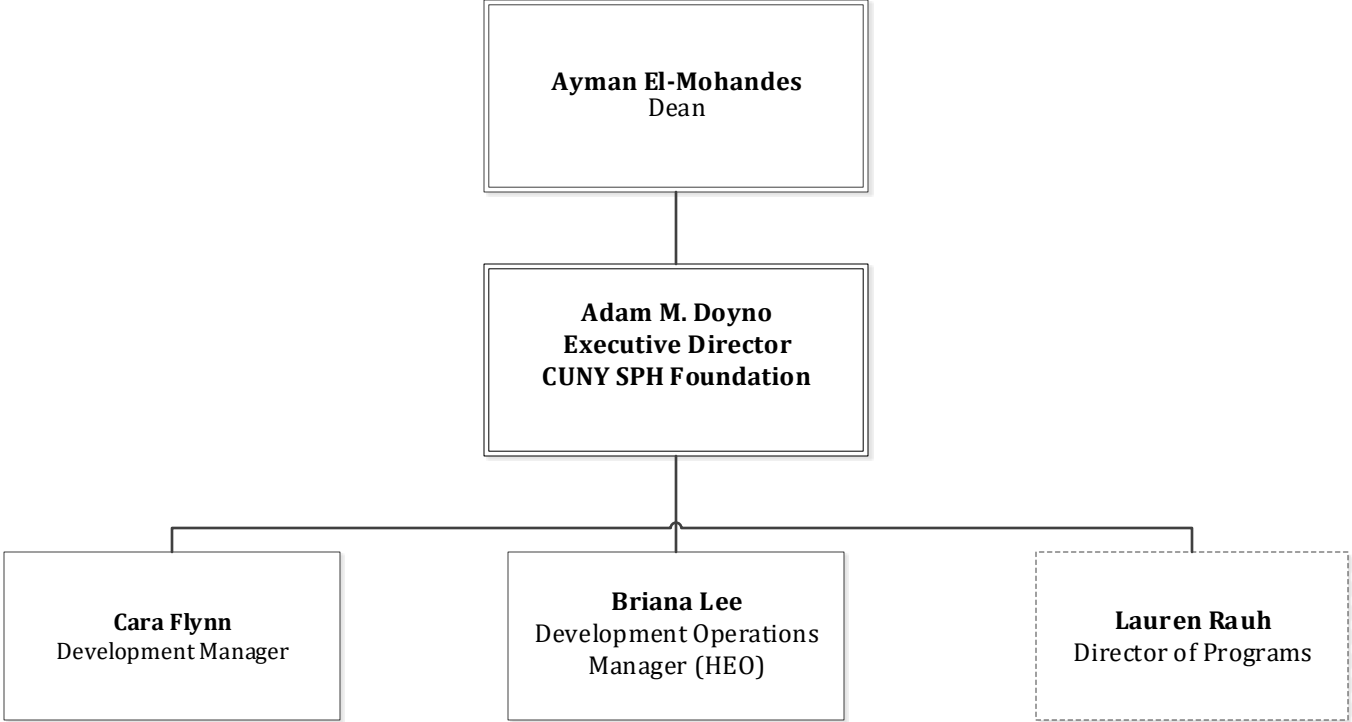


\* The Executive Director for Business Services and Finance, HR Director, CIO, Campus Public Safety Sergeant, and Facilities Planning Director report to the Senior Associate Dean for Administration, with a dotted line report to the Assistant Dean for Administration and Strategic Initiatives

**CUNY Graduate School of Public Health and Health Policy  
Centers and Institutes – Table of Organization –  
FT Tax-Levy Faculty and Staff  
6/1/2024**



**CUNY Graduate School of Public Health and Health Policy  
Centers and Institutes - Table of Organization -  
FT Tax-Levy Faculty and Staff  
6/1/2024**



\*and Executive Director of State and Local Public Health Initiatives