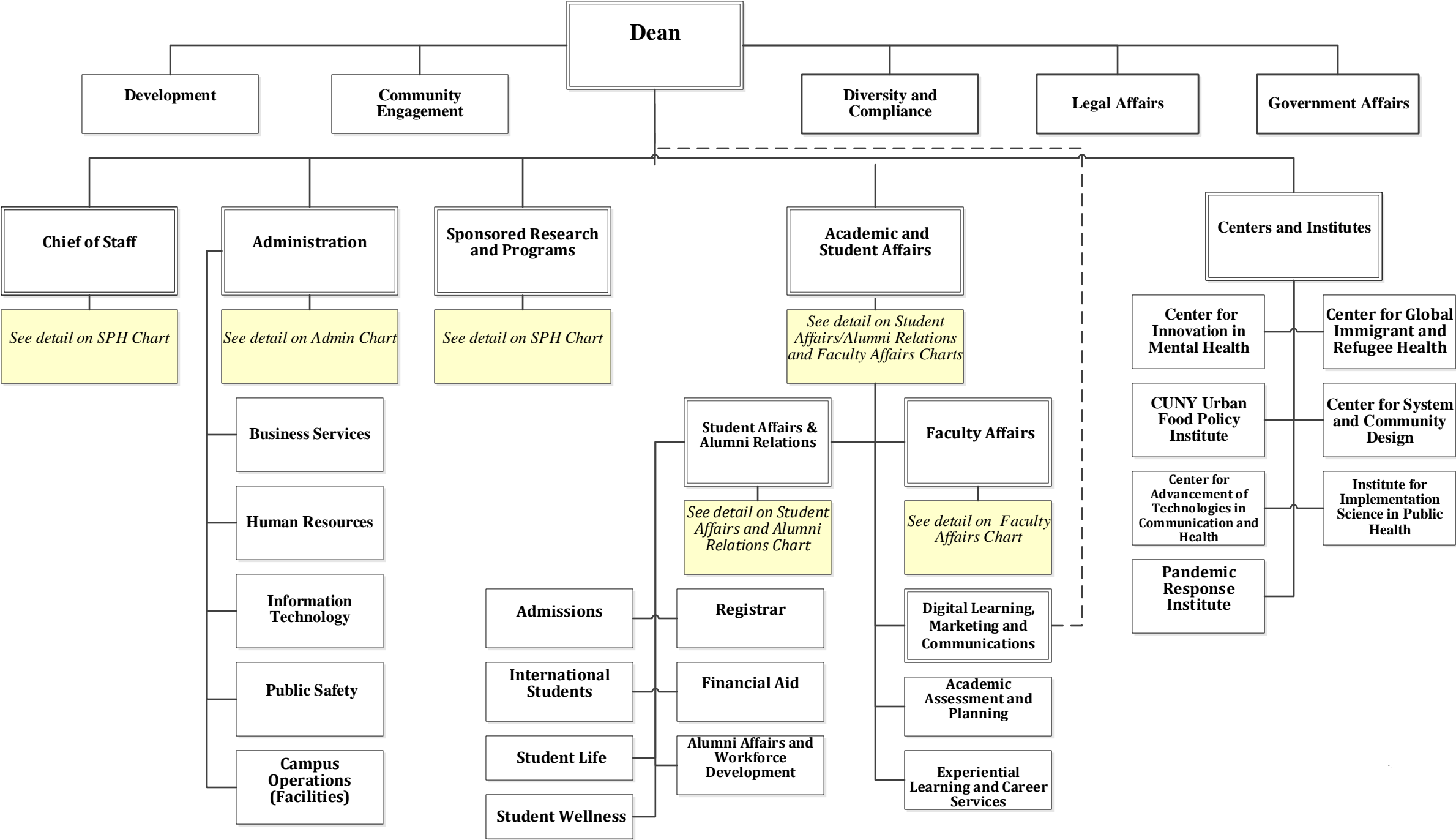


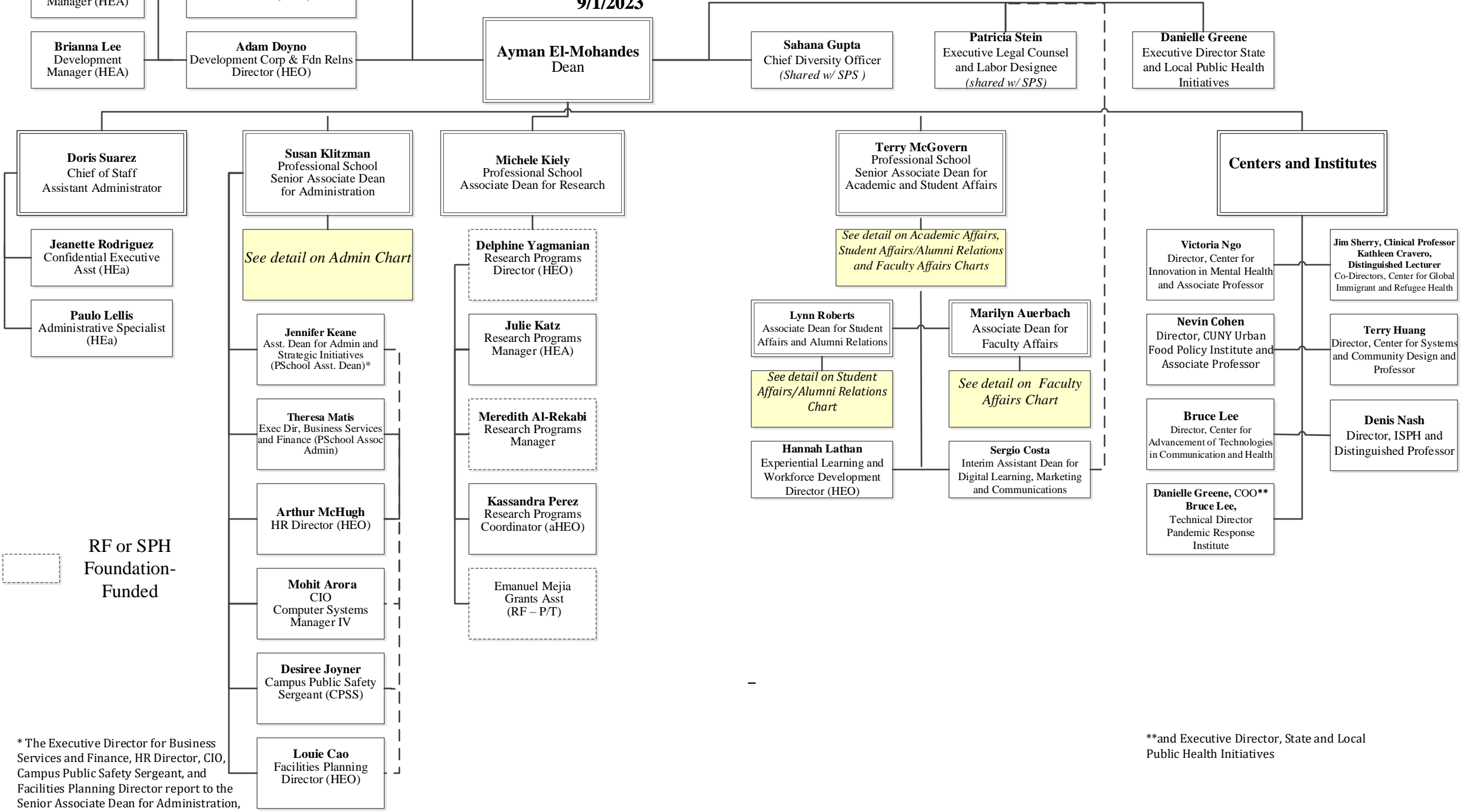
CUNY Graduate School of Public Health and Health Policy - Table of Organization – 9/1/2023



CUNY Graduate School of Public Health and Health Policy

Table of Organization

9/1/2023



RF or SPH Foundation-Funded

*The Executive Director for Business Services and Finance, HR Director, CIO, Campus Public Safety Sergeant, and Facilities Planning Director report to the Senior Associate Dean for Administration, with a dotted line report to the Assistant Dean for Administration and Strategic Initiatives

**and Executive Director, State and Local Public Health Initiatives

**CUNY Graduate School of Public Health and Health Policy
Academic Affairs
Table of Organization
9/1/2023**

Terry McGovern
Professional School
Senior Associate Dean for
Academic and Student Affairs

Ingrid Kalemi
Administrative
Specialist (HEa)

Lynn Roberts
Associate Dean for Student
Affairs and Alumni Relations

*See detail on Student
Affairs/Alumni Relations
Chart*

Marilyn Auerbach
Associate Dean for
Faculty Affairs

*See detail on Faculty
Affairs Chart*

Hannah Lathan
Experiential Learning and
Career Services Director
(HEO)

Maya Lloyd
Student Career Pgrm. Mgr.
(HEA)

Tina Lin
Student Career Advisor
(aHEO)

Monica Robles
Special Projects Mgr.

Taylor Drost
Career Skills Academy
Program Mgr.

Andrea Belfast
Admin. Asst (PT)
(College Asst)

Robyn Gertner
Executive Director of
Academic Strategy and
Operations (HEO)

Alexis Feinberg
Institutional Research
Specialist (HEa)

Matthew Paczkowski
Academic Student Support
Manager (HEA)

Lauren Fowler
Academic Advising
Coordinator (aHEO)

Sergio Costa
Interim Assistant Dean for
Digital Learning, Marketing
and Communications

Sumana Chandra
Director of Communications
(HEO)

Ariana Costakes
Communications Electronic
Media Mgr. (HEA)

Chrissy Holman
Digital Communications
Mgr. (RF Proj. Mgr.)

Laura Meoli-Ferrigon
Learning Design and
Multimedia Innovation
Mgr. (HEa)

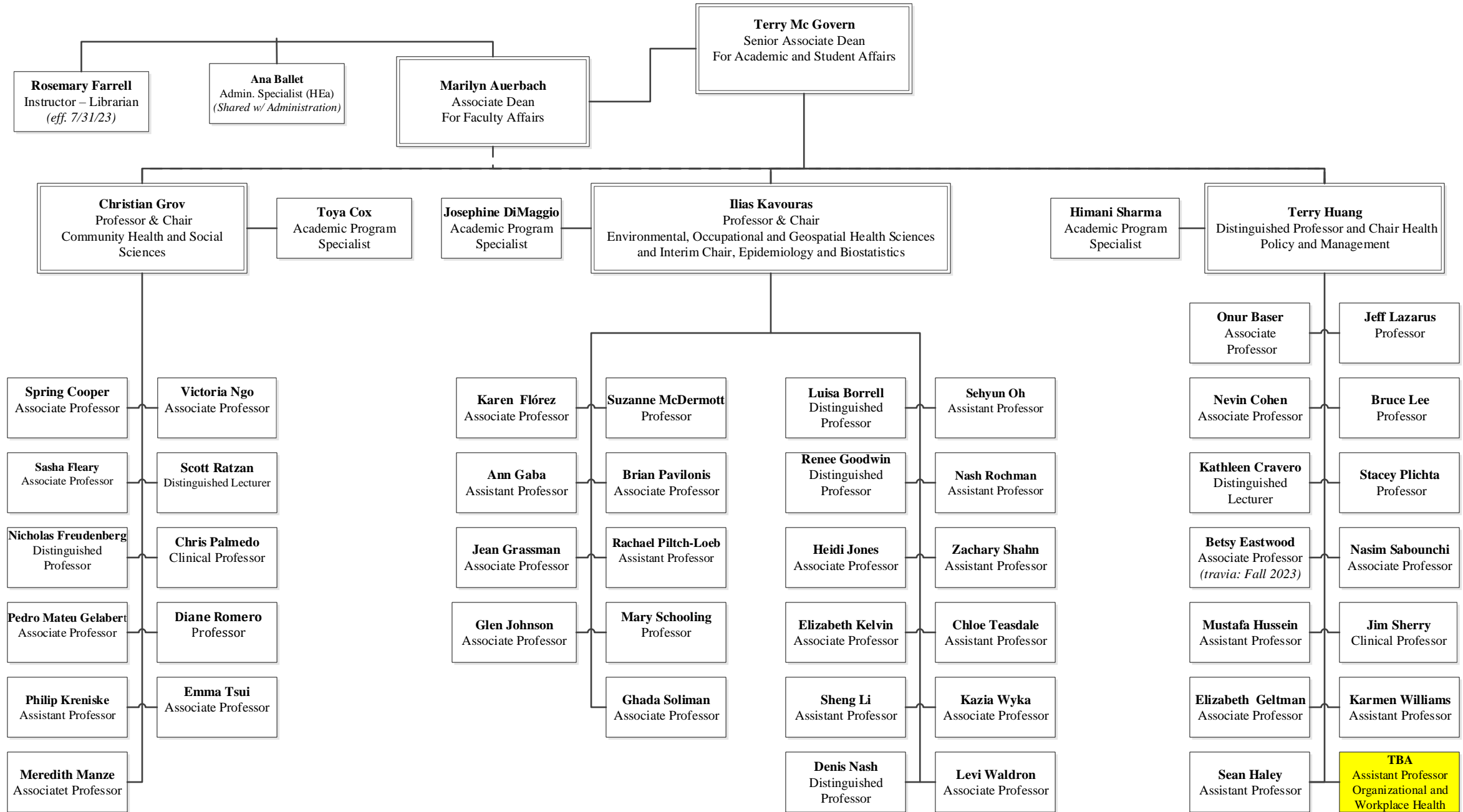
Brian Asare
Videographer (PT)
(College Asst)

Besnik Berisha
Digital Mktg. Specialist
(RF Res. Asst)

**RF or SPH
Foundation-
Funded**

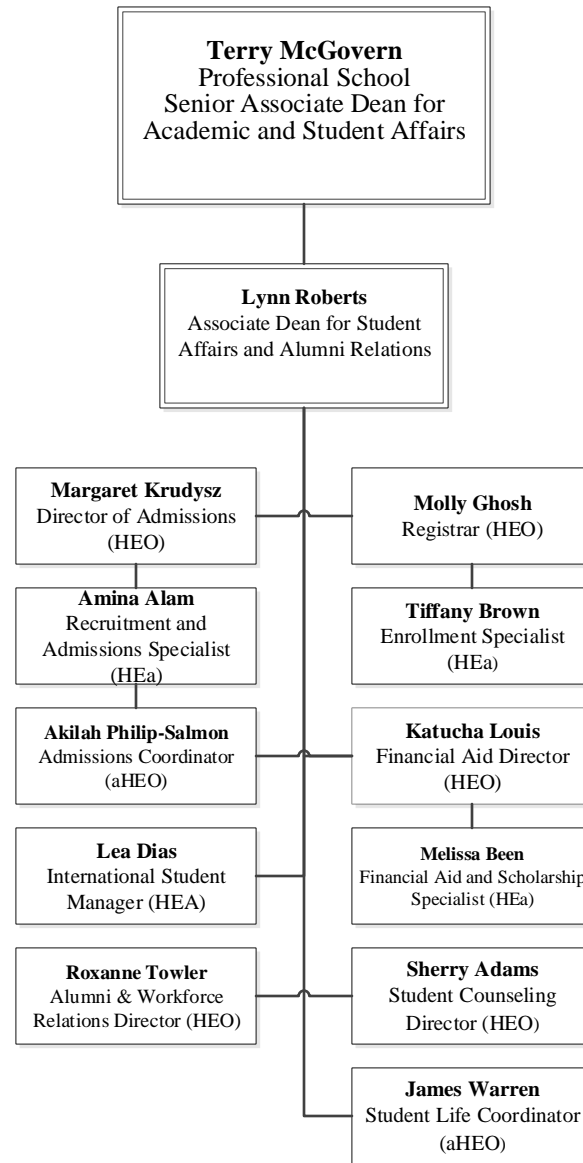
*The Executive Director for Business Services and Finance, HR Director, CIO, Campus Public Safety Sergeant, and Facilities Planning Director report to the Senior Associate Dean for Administration, with a dotted line report to the Assistant Dean for Administration and Strategic Initiatives

**CUNY Graduate School of Public Health and Health Policy
Faculty Affairs - Table of Organization – FT Faculty and Staff
9/1/2023**

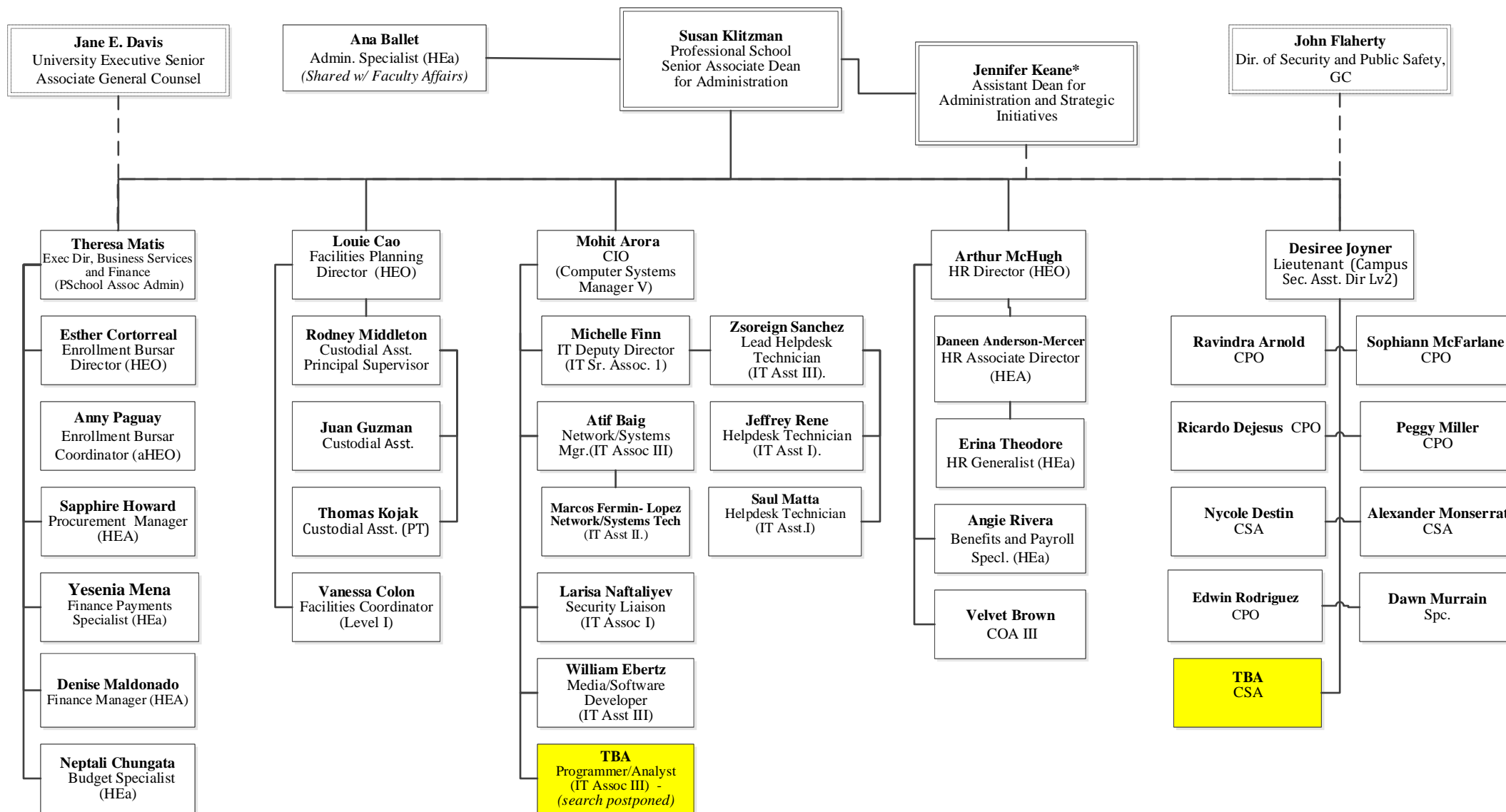


*Excludes Research Faculty who are not affiliated with Academic Departments

CUNY Graduate School of Public Health and Health Policy
Student Affairs and Alumni Relations
Table of Organization – FT Faculty and Staff
9/1/2023

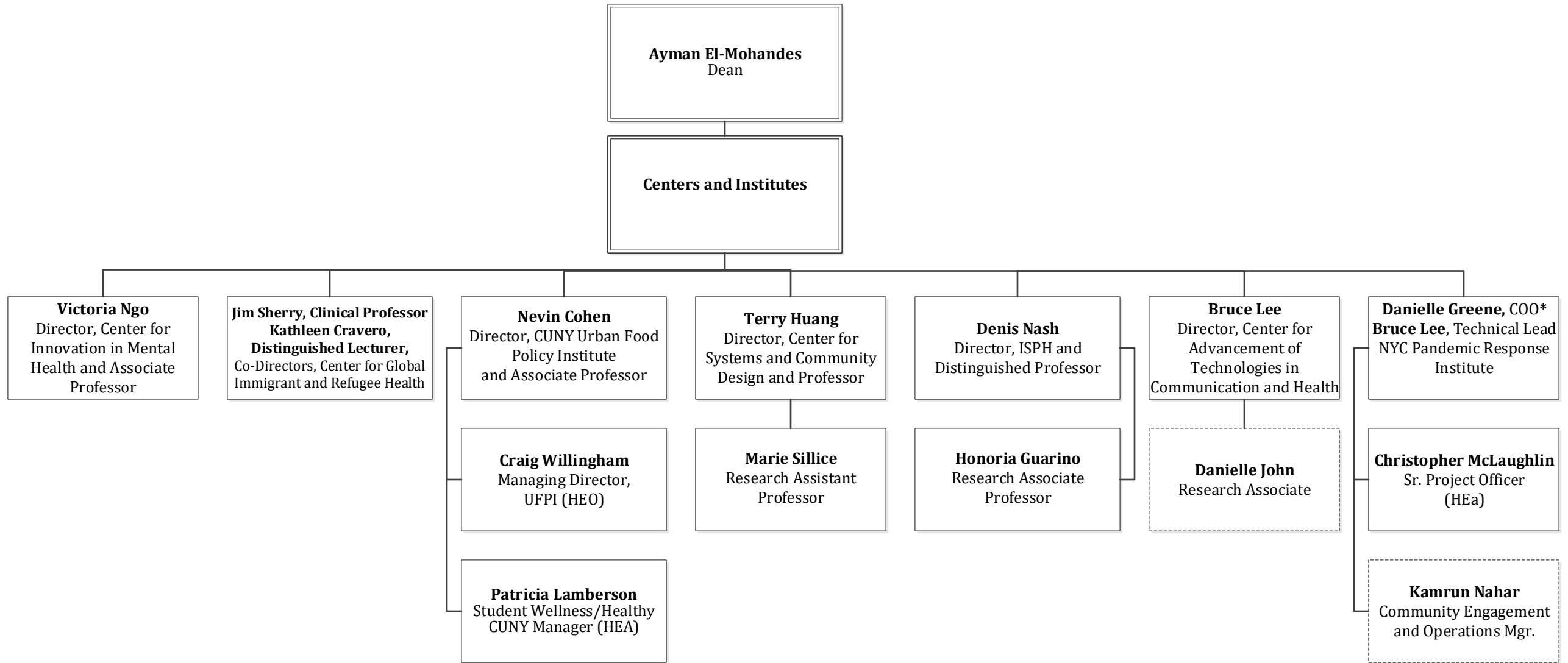


**CUNY Graduate School of Public Health and Health Policy
Administrative Services
Table of Organization – FT Staff
9/1/2023**



*The Executive Director for Business Services and Finance, HR Director, CIO, Campus Public Safety Sergeant, and Facilities Planning Director report to the Senior Associate Dean for Administration, with a dotted line report to the Assistant Dean for Administration and Strategic Initiatives

**CUNY Graduate School of Public Health and Health Policy
Centers and Institutes – Table of Organization –
FT Tax-Levy Faculty and Staff
9/1/2023**



*and Executive Director of State and Local
Public Health Initiatives