

# ANNUAL REPORT

2022



GRADUATE SCHOOL OF PUBLIC HEALTH & HEALTH POLICY



Dear friends and colleagues,

I am delighted to share with you the 2022 Annual Report for the CUNY Graduate School of Public Health and Health Policy. As our school and community continue to grapple with an ongoing pandemic and the many challenges to public health policy in the last year, CUNY SPH has continued to nurture an innovative and supportive learning environment for our students, ensuring they are equipped to navigate the ever-changing public health landscape as future public health professionals.

A unique partnership with the City and State of New York has opened up the opportunity for our school to help shape the planned Science Park and Research Campus in Kips Bay, a first-of-its kind innovation hub which will transform the Brookdale Campus on East 25th Street into new, state-of-the-art teaching and commercial spaces. Our school will transition to the new campus, allowing us to launch an undergraduate public health degree program.

The CUNY SPH research portfolio continues its robust growth with a 30% increase in expenditures over the previous year. Our research, advocacy and collaboration with community partners continues to inform public health policy and practice.

Our exceptional faculty brought in record-breaking grants that will fund cutting-edge initiatives to address the many determinants of population health both locally and globally.

Our students continue to respond to their professors and learning experiences with excellent ratings. Student graduation rates remain high, attesting to the broad academic, financial and wellness support we are committed to providing for each and every one of our students.

In the spring we celebrated our largest graduating class to date with a total of 290 graduates from our doctoral, masters and advanced certificate programs.

We are grateful for the unwavering support from our Foundation Board. Their generous scholarships and fellowships make graduate education accessible for our students.

We thank our esteemed advisory council for their continued guidance as we strive to provide our students with the highest quality graduate education.

I extend my deepest gratitude to our students, faculty and staff for your continued commitment to advancing public health amid ever-changing challenges. Your dedication to a public health practice that is equitable, accessible and founded in social justice sets the stage for improved health outcomes in New York City and beyond.

With my warmest wishes,



**Ayman El-Mohandes, MBCh, MD, MPH**  
DEAN



## CONTENTS

- 2 Section I**  
Preparing for the Future of Public Health in NYC
- 6 Section II**  
Our Students  
By the Numbers
- 8 Section III**  
Our Exceptional Faculty
- 10 Section IV**  
Research and Initiatives
- 15 Section V**  
Finances
- 16 Section VI**  
CUNY SPH Foundation  
Year-in-Review
- 21 Appendices**  
Academic Programs,  
Foundation Board  
and Advisory Council,  
Faculty



SECTION I

---

# PREPARING FOR THE FUTURE OF PUBLIC HEALTH IN NYC

# Science Park and Research Campus Kips Bay (SPARC): A new, state-of-the-art campus for CUNY SPH

*This fall, New York City and State leadership announced a unique partnership with CUNY to launch a first-of-its-kind innovation hub which will transform the Brookdale Campus on East 25th Street into new, state-of-the-art teaching and commercial spaces. The Science Park and Research Campus (SPARC) Kips Bay will include new, modern facilities for CUNY SPH and other CUNY health sciences schools and programs, along with an array of medical and commercial health sciences enterprises.*

The project will transform an entire city block with over 1.5 million square feet of academic, public health and life sciences space and rebuild a new accessible pedestrian bridge on East 25th Street connecting to the East River and Manhattan Waterfront Greenway. It will include 100,000 square feet of CUNY SPH laboratories, research centers, library, study areas, and vastly increased classroom space to dramatically enhance research and education for students and faculty. This expansion will allow CUNY SPH to launch an undergraduate public health degree program, creating new opportunities for CUNY students and forging a broader and more robust pipeline into

the public health professions.

At a press event in October, Governor Kathy Hochul, New York City Mayor Eric Adams and CUNY Chancellor Félix V. Matos Rodríguez unveiled the plans for the new campus.

“Coming off the heels of the pandemic we see more than ever that investment is needed in public health, education, and life sciences,” Governor Hochul said. “And our success moving forward will be about how we prepare future generations and connect our young people to jobs in these fields equitably. We believe this project will achieve these goals while diversifying our economy in supporting its resiliency long-term.”

“COVID-19 proved how important New York’s public hospitals, research institutions and universities are to the survival and the well-being of our beloved city,” said Chancellor Matos Rodríguez. “So it is fitting that the mayor and the governor have teamed up with CUNY to transform this Brookdale Campus into a public health and education hub to better meet the needs of our students, faculty and of all New Yorkers. CUNY is proud to be a part of this partnership, which will help New York recover from the pandemic equitably.”

“This is a vital opportunity for CUNY SPH to achieve its full potential and enhance its work to prepare the public health leaders of tomorrow,” said CUNY SPH Dean Ayman El-Mohandes. “The revitalized new campus will allow us to deepen our presence in New York City while maintaining our commitment to Harlem and the partnerships we have worked hard to cultivate in the community. With new expanded facilities and resources, we will be even better equipped to promote and sustain healthier populations in Harlem, New York City and around the world.”

Studying and working side by side with SPARC’s other clinical, commercial and academic institutions will enrich student experiential learning and open up extensive new career opportunities. The hub will feature a NYC Health + Hospitals/ Bellevue ambulatory care center, a simulation training center that will allow CUNY students and others to simulate patient scenarios, a New York City Department of Education high school providing hands-on learning in health care and sciences to prepare students for careers in these growing sectors, a new Office of Chief Medical Examiner Forensic Pathology Center, which will be a nation-leading training facility for forensic pathologists, and a new commercial office and wet lab development for the life sciences industry.

SPARC Kips Bay will be funded jointly by the city and state with additional investment from the private sector in life sciences. The project is expected to break ground in 2026 and be completed by the end of 2031.

Studying and working with SPARC’s other clinical, commercial and academic institutions will enrich student experiential learning and open up extensive new career opportunities.





# The NYC Pandemic Response Institute: Applying lessons from COVID-19 to current health crises

*Last Spring, New York City Mayor Eric Adams launched the New York City Pandemic Response Institute (PRI), a partnership with CUNY SPH and Columbia University to help apply the lessons learned from the COVID-19 pandemic to the urgent public health emergencies currently facing New Yorkers, from infectious diseases to climate-related events.*

A dynamic new resource designed to support New York City across the entire lifecycle of emergency preparedness, the PRI is helping the city prepare for, respond to and recover from future health crises, maximizing engagement and impact across the city, particularly in underserved communities.

In coordination with the New York City Department of Health and Mental Hygiene (DOHMH) and New York City Emergency Management (NYCEM), the PRI works with New Yorkers in communities in each of the five boroughs to develop locally tailored health solutions, information and resources to develop greater resilience to the adverse consequences of public health emergencies.

At a press conference in May, Mayor Adams highlighted the need for New York City to be prepared for the next pandemic and to not wait for downstream responses. “We have urgent public health crises in our city, and we need to proactively face them with upstream solutions,” said Adams. “The Pandemic Response Institute will bring together city agencies, experts across various fields, and nonprofit and for-profit partners to tackle some of the biggest, most intractable public health challenges for New Yorkers.”

The PRI includes diverse partnerships with dozens of nonprofit, community, faith-based, research and corporate entities that responded to COVID-19 across New York City and are committed to the PRI’s whole-of-society approach. Together, this diverse group of contributors brings

the necessary resources, expertise, commitment and vision to the critical task of equipping New York City to respond to future public health emergencies and to invest in more robust infrastructure and greater health equity.

“This public-private partnership between two of the top public health academic institutions in New York City, along with other partners in the community, industry, academia and government, promises to provide a wide range of experts in support of New York City’s strategy to prevent, prepare and recover from similar threats in the future,” said Dean Ayman El-Mohandes.

CUNY SPH is leading the efforts of the PRI in communications, community outreach and workforce development and will contribute to other PRI efforts such as data science and systems modeling.

Participating CUNY SPH centers and institutes include the Center for Advanced Technology and Communication in Public Health (CATCH), Public Health Informatics, Computational, and Operation Research (PHICOR), the Center for Systems and Community Design, the Harlem Health Initiative and the Urban Food Policy Institute, among others.

To learn more about the New York City Pandemic Response Institute, visit [pri.nyc](http://pri.nyc).

WE HAVE URGENT PUBLIC HEALTH CRISES IN OUR CITY, AND WE NEED TO PROACTIVELY FACE THEM WITH UPSTREAM SOLUTIONS



## Danielle Greene

DrPH, MPH, MSCHES

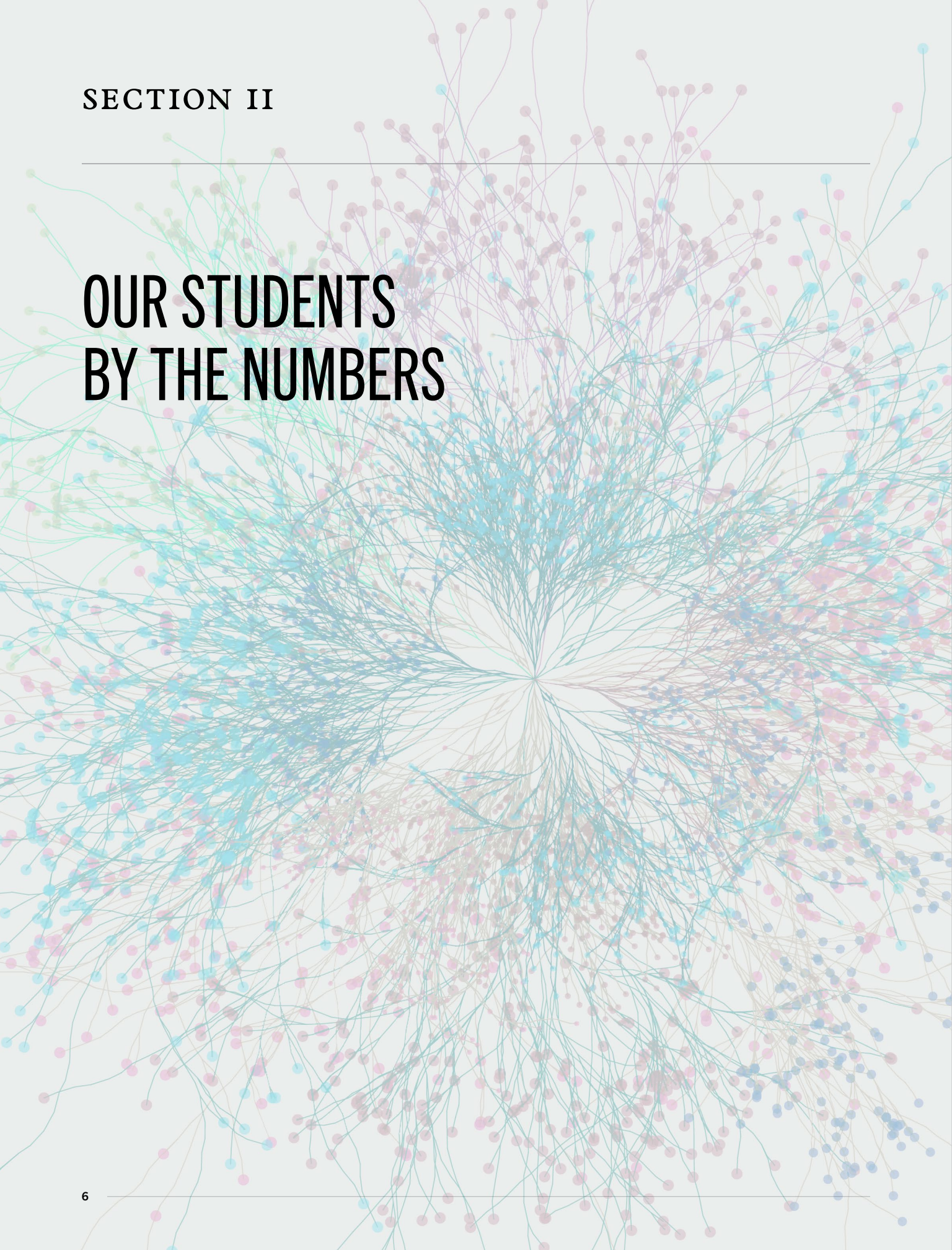
In February, CUNY SPH welcomed Dr. Danielle Greene to the staff as Executive Director of State and Local Public Health Initiatives. In this role, she leads the programmatic, managerial and operational aspects of the Pandemic Response Institute for CUNY SPH.

Dr. Greene has over twenty years of public health leadership experience in local and state government, academic and not-for-profit settings. Most recently, she was with the New York State Department of Health, where she was Chief of Staff to the Commissioner and an integral part of New York State’s COVID-19 response. Previously, she held senior positions in the Healthy Homes Program at the New York City Department of Health & Mental Hygiene and the Center for Applied Public Health at Columbia University, and an adjunct professor at the NYU School of Global Health. In these positions, she has coordinated with community, faith, academic and governmental partners to address the opioid pandemic, aging and long-term care, maternal morbidity and mortality, AIDS, lead poisoning and asthma through the lens of equity and social determinants.

SECTION II

---

# OUR STUDENTS BY THE NUMBERS





### TOTAL STUDENT ENROLLMENT

2017	559
2018	589
2019	746
2020	922
2021	948

### TOTAL ENROLLMENT BY PROGRAM

#### MPH

Community Health	196
Environmental and Occupational Health Sciences	32
Epidemiology and Biostatistics	99
Health Policy and Management	240
Public Health Nutrition	64

#### MS

Environmental and Occupational Health Sciences	34
Global and Migrant Health Policy	16
Health Communication for Social Change	36
Population Health Informatics	36

#### PhD

Community Health and Health Policy	56
Environmental and Planetary Health Science	11
Epidemiology	34

#### DPH

Community, Society, and Health	3
Environmental and Occupational Health	3
Health Policy and Management	4

<b>Nutrition and Dietetic Internship</b>	<b>17</b>
--	-----------

#### Advanced Certificate

Public Health	58
Industrial Hygiene	12

### STUDENTS EMPLOYED FULL AND PART TIME

Employed full time	65%
Employed part time	20%

### STUDENTS ATTENDING FULL TIME VS PART TIME

Attend full time	29%
Attend part time	71%

### GRADUATION RATES

Doctoral	100%
Master's	82%

### AVERAGE YEARS TO COMPLETE DEGREE

Doctoral	6.1
Master's	2.5

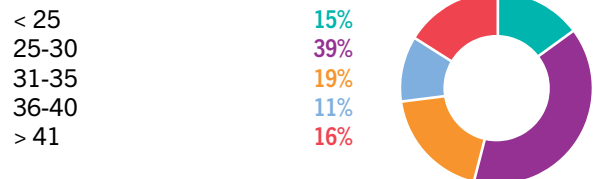
### ALUMNI OUTCOMES ONE YEAR AFTER GRADUATION

<b>98%</b>	<b>85%</b>	<b>93%</b>
are employed or continuing their education and training	are working in the area in which they earned their degree	would recommend CUNY SPH to a prospective student

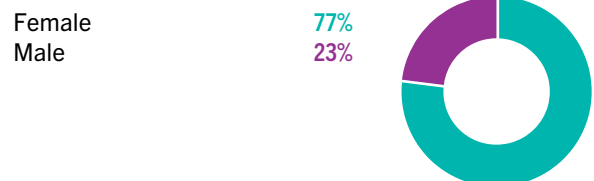
## A snapshot of our matriculants

Our student body is diverse in age, gender, race and ethnicity.

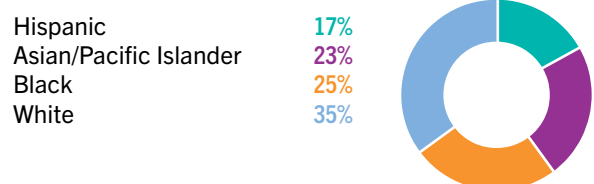
#### AGE



#### GENDER



#### RACE / ETHNICITY

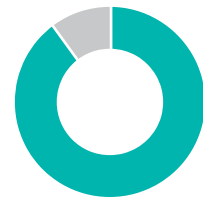


## SECTION III

# OUR EXCEPTIONAL FACULTY

## Excellence in teaching

Nearly ninety percent of students evaluated their professor as excellent, very good, or good.



### CUMULATIVE STUDENT RATINGS OF PROFESSORS

Excellent  
Very Good  
Good  
Fair  
Poor

46%  
27%  
16%  
8%  
3%



### STUDENT-TO-FACULTY RATIO

*10:1*

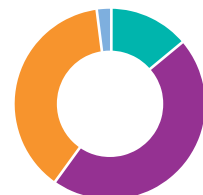
### COURSES TAUGHT BY FULL TIME FACULTY

*66%*

### CLASS SIZE DISTRIBUTION BY NUMBER OF STUDENTS

Fewer than 10  
10 - 24  
25 - 40  
Over 40

14%  
46%  
38%  
2%



## Welcoming new faculty

We continue to enjoy success in attracting high caliber new faculty, expanding our ability to conduct cutting-edge research and ultimately being able to provide our students with a broader offering of public health coursework. We welcomed three new faculty members in 2022.

### Onur Baser

PROFESSOR OF HEALTH ECONOMICS  
IN THE DEPARTMENT OF HEALTH  
POLICY AND MANAGEMENT

*Dr. Onur Baser joined the CUNY SPH* faculty as professor of health economics in the Department of Health Policy and Management. Previously Dr. Baser was at Columbia University where he was associate professor at the Center for Innovation and Outcomes Research. He also worked as adjunct professor of internal medicine at the University of Michigan in Ann Arbor.

His work in the field of propensity score matching was one of the first applications of econometric techniques in outcomes research to provide guidelines for choosing among different types of matching techniques. He created several proprietary algorithms for comparative effectiveness studies in health economics and outcomes research. Dr. Baser serves as a litigation expert on statistical issues on health care data analysis. He is currently editor in chief for the *Journal of Health Economics and Outcomes Research*.



### Nasim Sabouchi

ASSOCIATE PROFESSOR OF HEALTH POLICY  
AND MANAGEMENT IN THE DEPARTMENT OF  
HEALTH POLICY AND MANAGEMENT

*Dr. Nasim Sabouchi joined the* CUNY SPH faculty as associate professor of health policy and management in the Department of Health Policy and Management. As an industrial and systems engineer, she contributes to the advancement of system dynamics modeling and computer simulation for studying complex health and social systems

and leads various projects in the domain of public health and health policy analysis, including enhancing access to care for socio-economically disadvantaged populations and Medicaid recipients, prevention of prescription misuse, antibiotic resistance, and epidemics. Dr. Sabouchi has extensive experience in developing system dynamics simulation models through group model building with various stakeholders including residents in low-income communities, policy makers, physicians, and scientists.



### Zach Shahn

ASSISTANT PROFESSOR OF EPIDEMIOLOGY  
AND BIOSTATISTICS IN THE DEPARTMENT OF  
EPIDEMIOLOGY AND BIOSTATISTICS

*Dr. Zach Shahn joined the CUNY SPH* faculty as assistant professor in the Department of Epidemiology and Biostatistics. His research interests center on the theory and application

of causal inference methods to estimate time-varying treatment effects. Dr. Shahn received his PhD in statistics from Columbia University advised by David Madigan, was a postdoc at the Harvard School of Public Health supervised by Jamie Robins and Miguel Hernan and worked at IBM Research in the Department of Healthcare and Life Sciences.



# RESEARCH AND INITIATIVES



Our faculty research advances the science of public health using interdisciplinary approaches and a social justice lens. Our research builds evidence for sound social justice policy, a key component of the school’s mission.

**Total research expenditures rose substantially in 2022, to nearly \$20 million, a 30 percent increase over the previous year.**

**TOTAL RESEARCH EXPENDITURES BY FISCAL YEAR**

FY 2022 .....	\$19,991,466
FY 2021 .....	\$15,302,079
FY 2020 .....	\$12,904,362
FY 2019 .....	\$9,105,296
FY 2018 .....	\$8,330,419
FY 2017 .....	\$5,840,860

**DISTRIBUTION OF RESEARCH AWARDS BY FACULTY RANK**

Full Professor	48%
Associate Professor	31%
Assistant Professor	11%
Other	10%



**Our faculty published 324 peer-reviewed articles in 2022.**

**DISTRIBUTION OF FIRST CUNY SPH AUTHORS\* BY FACULTY RANK**

Full Professor	51%
Associate Professor	28%
Assistant Professor	21%



\*Not necessarily the paper first author

Faculty research generates invaluable employment and learning opportunities for our students, allowing them to practice hands-on public health through data collection, instrument development, data analysis and manuscript preparation.

**19.4%** of the articles were co-authored by other CUNY SPH faculty.

**32%** of our research staff in 2022 were CUNY SPH students.

## MAJOR GRANTS

### Funding for our most innovative research and initiatives

CUNY SPH researchers secured several major grants in 2022, funding cutting-edge initiatives that address the numerous determinants of population health.

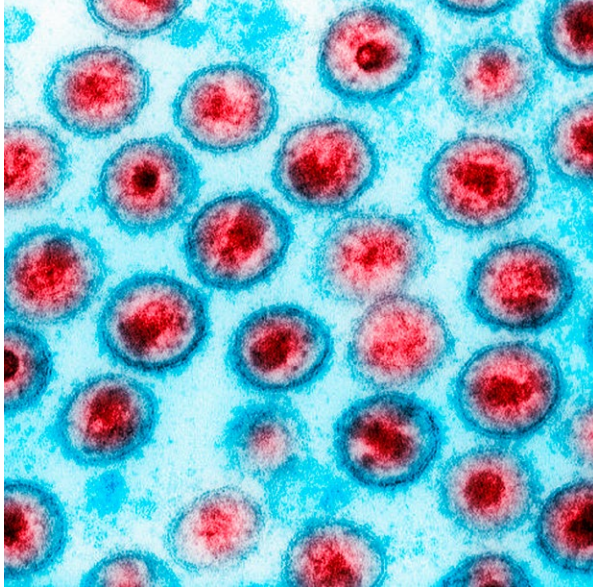


#### Using AI to tailor nutrition guidance for different dietary needs

Early in the year, in what is the largest single-cycle NIH grant awarded to CUNY to date, CUNY SPH and the United States Military Academy at West Point were awarded \$12.4 million over five years to establish the world's first artificial intelligence (AI) and computational modeling center for precision nutrition and health.

*The center is co-led by two world-renowned AI and computational modeling experts, CUNY SPH Professor Bruce Y. Lee and West Point Professor Diana M. Thomas. Together they will develop state-of-the-art AI, machine learning, Big Data methods, and other data science approaches to better understand how different people have different dietary needs and to avoid potential biases and disparities that may result from more general, one-size-fits-all nutrition recommendations.*

*“This grant is part of a major NIH initiative to move our society more towards precision nutrition, better tailoring nutrition guidance and advice to different needs of people and recognizing the diversity that exists,” Lee explains. “As the AI Center for this initiative, we are at the leading edge of developing the new computer algorithms, approaches, methods, and tools that can help everyone improve their nutrition and health.”*



Transmission electron micrograph of HIV-1



Columbus Park in Chinatown, NYC

## Methamphetamine use and HIV risk in sexual minority men

In April, CUNY SPH and the University of Miami Miller School of Medicine were awarded an initial two-year, \$3,900,000 grant by the National Institute of Allergy and Infectious Diseases (NIAID) to study meth use and HIV risk in sexual minority men.

*Supported by NIAID's LITE-2 initiative, CUNY SPH* Professor Christian Grov, University of Miami Professor Adam Carrico, and colleagues are examining the “where,” “how,” and “why” of meth use and HIV among men who have sex with men. For this landmark study, they will enroll 5,000 sexual minority men across the United States into a cohort study. Assuming the team can meet a series of milestones during the first two years of the study, they will become eligible for up to three more years of funding. The study's broader goals include testing scalable, telehealth motivational enhancement interventions to support PrEP use and meth reduction. In addition, they will determine why meth use is linked to HIV vulnerability by examining if meth-induced alterations in rectal immune function amplify biological vulnerability to HIV.

“We have known for decades that meth use contributes to behavioral disinhibition, which puts people at greater risk for HIV, but now we will also answer questions related to whether meth use increases biological vulnerability,” says Grov, an investigator at the Institute for Implementation Science in Population Health (ISPH) at CUNY SPH. “This could point us toward the development of novel biomedical interventions targeting rectal immune function.”

## Park-based strategies to improve mental well-being

In September, the National Institutes of Health awarded a team of CUNY SPH researchers led by Professor Terry T-K Huang a five-year, \$6.7 million grant to design and implement programmatic strategies to enhance the social environment of neighborhoods by leveraging newly renovated public parks in low-income New York City neighborhoods.

*The researchers will conduct a hybrid effectiveness-implementation randomized stepped wedge trial* in eight neighborhoods to determine the impact on community-level health-related quality of life and mental health of a community-engaged intervention that enables local stakeholders to design and implement programmatic strategies in the newly renovated parks.

The team will employ human-centered design (HCD), a process methodology for problem-solving and innovation, in an asset-based approach to collaborating with local partners. Specifically, each community will design one primarily physical activity strategy that promotes reach and inclusive participation among adults and one primarily social strategy—such as music, outdoor market, park beautification groups—that enhances social interaction and relationships.

“Parks are critical for neighborhood engagement and vibrancy, which in turn contribute to community well-being,” says Dr. Huang. “This study is significant both conceptually and methodologically. It pushes health disparities research from being community-participatory to community-centered, where the solutions are community-driven and based on authentic community needs, values and culture.”

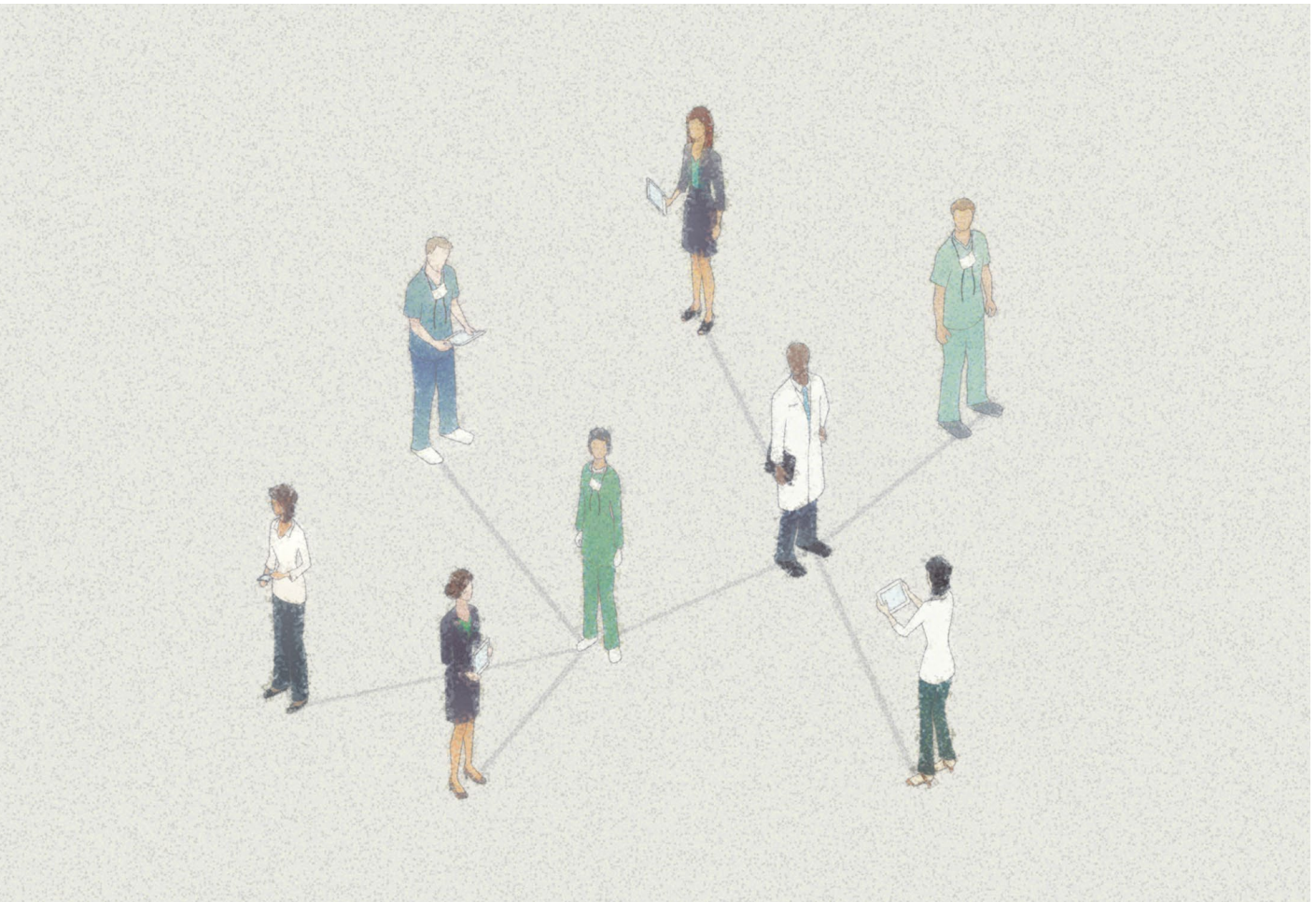
## Applying a novel opioid intervention platform

In October, The National Institutes of Health awarded a two-year, \$1,147,508 grant to CUNY SPH Associate Professor Nasim Sabounchi and Yale School of Medicine Assistant Professor Rebekah Heckmann to test a new evidence-based intervention that links people who have overdosed with access to medication for opioid use disorder, harm reduction services and recovery supports.

*Sabounchi, Heckmann, and colleagues will implement a comprehensive telehealth platform that can be deployed at the site of an overdose or in the emergency department with minimal time or effort by existing staff. The platform will provide real-time access to providers who prescribe medication for opioid use disorder and other harm reduction services for high-risk individuals and may remove many of the barriers to follow up that these individuals face.*

The researchers will collect high-quality data about the processes and outcomes associated with deployment of this platform in Connecticut that can be integrated with their existing system dynamics model to determine how or whether interventions should be implemented more broadly in the future.

“There is a great need to expedite and facilitate access to medication for opioid use disorder and respond effectively to witnessed overdoses,” says Sabounchi. “Our long-term goal is to implement these novel system dynamics modeling and telehealth strategies in Connecticut, with subsequent dissemination nationally, ultimately improving access to medication and reducing overdose events and fatalities.”





# SECTION V

# FINANCES

**Our total tax levy budget for 2021-22 was \$29,658,976.**

With fifty two percent of that budget coming from our New York State allocation, we consider ourselves accountable to the taxpayers of New York City and New York State. This shapes our mission as a *public* school of public health, committed to educate New York's future public health workforce and to conduct the research that helps inform public health policy in our state and beyond.

**Where did our tax levy funding come from?**

### SOURCES OF TAX LEVY ADMINISTERED FUNDS

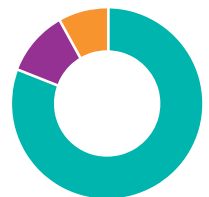
State Allocation	52%
Tuition & Fees	26%
Pledges & Donations	3%
Prior Year Reserves	19%



**How did we spend it?**

### EXPENDITURES BREAKDOWN

Personnel	81%
Rent	11%
OTPS	8%



### PERSONNEL BREAKDOWN

FT Faculty	42%
PT Adjuncts/Instructional Support	8%
Academic and Student Affairs	12%
Executives	14%
Staff	24%



SECTION VI

---

# CUNY SPH FOUNDATION YEAR-IN-REVIEW

Following up on a record-breaking year in 2021, the CUNY SPH Foundation spent 2022 reinforcing its services and supports for the school, its students, the CUNY population and the Harlem community. The CUNY SPH Foundation exists to support the mission, vision and values of CUNY SPH as New York City’s public school for public health. To that end, nearly \$1 million were raised to bolster crucial programs and activities.

## Career Skills Academy

*The Foundation’s flagship student support program*, the Career Skills Academy, had a remarkable first year of activity. With 49 students in its initial cohort, students participated in a curriculum to enhance their soft skills, including carrying your career values into the workplace, confronting imposter syndrome, advancement and salary negotiation, critical thinking, professional communication, authenticity and more. The Academy featured master class speakers from across public, private and nonprofit leaders including City-block Health Co-Founder and CEO Dr. Toyin Ajayi, NYC Health Business Leaders Co-Founder and CEO Bunny Ellerin, former NYC Chief Health Equity Officer Dr. Torian Easterling, CEO of Jon Snow International Margaret Crotty and many more. Seeing the incredible merit of this program, KKR Covid Relief Fund made a matching commitment of \$250,000 to join BNY Mellon in funding a continuation and expansion of the program to include more students and a new mid-career track.

## Promoting Vaccine Literacy

*Implementing the Vaccine Literacy Campaign* was a core function of the Foundation throughout the year. The program addressed gaps in vaccine literacy by increasing community-level access to vaccine education and information. The VLC engaged over 200 partners including government, elected officials, faith-based organizations, community-based organizations, individuals and the private sector to establish networks of feedback loops for community support, data collection and reporting, needs, priorities and resource identification and informing policy and data reporting. Recognizing the importance of the VLC and its model of successful partnership and program development, BIO committed an additional \$150,000 initially to continue this initiative and expand its footprint to address routine vaccination recovery in Harlem.

## New Fellowship and Scholarship Opportunities

### Michael Meng Fellowship in Health Business



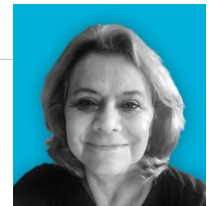
Co-Founder and CEO of Stellar Health and Founding CUNY SPH Foundation Board Member Michael Meng committed \$150,000 to launch this fellowship in spring 2023, which will seek to bridge the gap between health business and public health under the leadership of Dr. Terry Huang.

### Dr. Marilyn Aguirre-Molina & Dr. Carlos W. Molina Scholarship

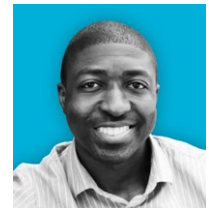


Dr. Marilyn Aguirre-Molina, CUNY SPH Professor Emeritus, and her husband Dr. Carlos Molina formed a new scholarship fund in their names to support students wishing to address issues of health equity that impact underserved communities of color, particularly Spanish-speaking communities.

### Harlem Health Fellowships



Ruth Wooden, a fellow CUNY SPH Foundation Board Member, committed \$125,000 to establish a new endowment for the Harlem Health Fellowship in Health Communications. Joining her was RubiconMD co-Founder and CEO and CUNY SPH Foundation Board Member Gil Addo, who donated \$50,000 to establish a fellowship in his name to support two students to work with the Harlem Health Initiative at CUNY SPH.



# Harlem Health Fellowships

Investing in our students for the good of the community.

*In 2022, two Foundation Board* members generously funded fellowship programs to enable CUNY SPH students to responsibly engage with our Harlem community.

Renowned marketing and communications strategist Ruth Wooden committed \$125,000 to fund the Harlem Health Fellowship in Health Communication for Social Change, which will connect students with local nonprofits to develop and implement health communications strategies for the organizations.

Through the fellowship, CUNY SPH students in the Health Communication for Social Change track completing their Capstone project, a culminating requirement of their degree program, are matched with local organizations as a consultative and strategic partner.

Given Harlem’s struggles with COVID-19 and vaccination, a special

emphasis is placed on organizations seeking to promote vaccination and debunk misinformation through a community communications campaign.

## The 2022-23 Harlem Health Fellowship in Health Communication for Social Change Fellow

**Aida Martinez** is a storied public health professional with a passion for service to historically marginalized populations. In her current role at The Trenton Health Team, she manages the Capital City Diabetes Collaborative, a grant funded program which addresses major issues identified with treatment of diabetes in Trenton, NJ from healthcare to social and environmental aspects.

The second fellowship is a \$50,000 commitment from Board Member Gil

Addo to invest in two student fellowships over the course of two years to provide day-to-day operational support to the overall Harlem health initiative.

The 2022 Addo fellows are from and for our community and believe strongly that bolstering community-based organizations strengthens existing infrastructure and gives community leaders the resources they need to enact change. This comes with the shared purpose to address racial and social equity, and to help our community reach its greatest potential and well-being, beyond systemic public health and social barriers.

## The 2022-23 Gil Addo Fellows

**Tomisha Hicks** is an MPH student in the Health Policy and Management track with a specialization in Maternal, Child, Reproductive, and Sexual Health. She comes to us with prior fellowship experience at Columbia University, as well as a Public Health Internship in Cape Coast and Elmina, Ghana. Since starting the fellowship, she has used her diverse experiences and expertise to also create and



AIDA MARTINEZ



TOMISHA HICKS

maintain systems that pertain to health protocol, emergency readiness, and school nutrition for a local middle school.

**Prea Khan** is an MPH student, also in the Health Policy and Management track. Prior to her studies at CUNY SPH, she worked closely with faculty at NYU Tandon as she led the undergraduate work-study program in Biomolecular Science. She is currently an Advanced Clinical Associate at Northwell GoHealth Urgent Care and has described her interests in improving NYC safety net hospitals, access to fresh produce for those suffering from food insecurity and living conditions in vulnerable communities.



## Two additions to the CUNY SPH Foundation Board bring new energy and expertise to the table.



### Jordana Kier

CO-FOUNDER AND CEO OF LOLA

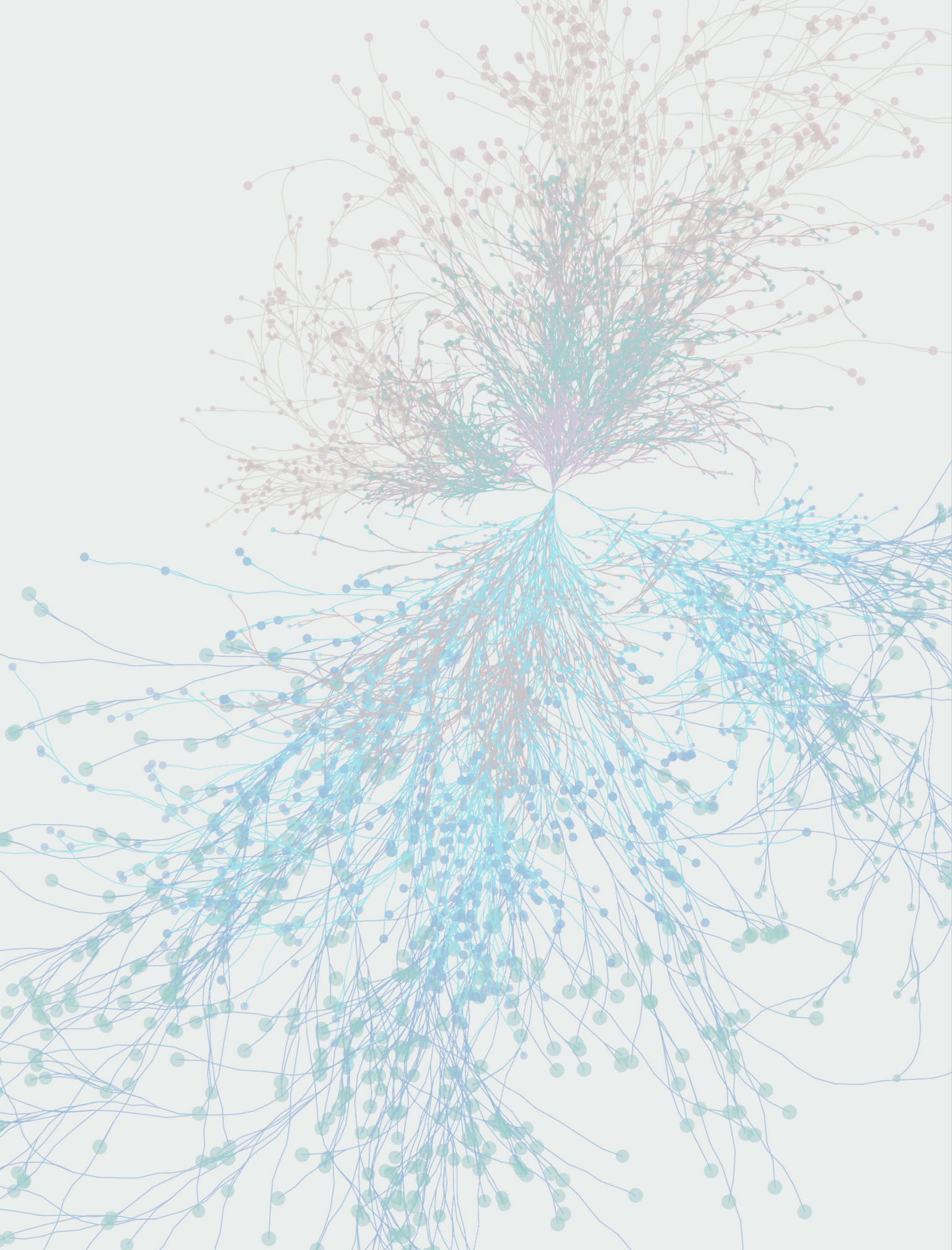
*Jordana Kier is the co-founder and Co-CEO of LOLA, the first lifelong brand for reproductive health. In her role, Jordana is responsible for overseeing the marketing and sales teams, leading the brand's efforts to provide an ever-expanding portfolio of trusted products and reproductive health resources for every stage of life. Jordana was responsible for overseeing LOLA's omnichannel expansion into Walmart, marking the retailer's largest investment in the natural feminine care category to date. Before co-founding LOLA, Jordana received her MBA from Columbia Business School. She graduated from Dartmouth College and was named to Forbes 30 Under 30 in 2016 and Crain's 40 under 40 in 2019.*



### Dr. Daniel Knecht

CHIEF CLINICAL INNOVATION OFFICER AT CVS CAREMARK

*Daniel Knecht, MD is a board-certified internist currently serving as Vice President and Chief Clinical Innovation Officer at CVS Caremark. He collaborates with clients as well as the product team to identify unmet needs in the marketplace and accelerate innovation to improve health outcomes and better manage costs. Since joining the company in 2016, Dr. Knecht has led a series of enterprise-wide strategic initiatives including the company's efforts to combat opioid misuse and addiction. Dr. Knecht graduated with honors from Dartmouth College and received a joint MD, MBA from Weill Cornell Medical College and Johnson Graduate School of Management where he was a recipient of the Lee Family Scholarship. He is a Fulbright Scholar in medical sciences and has performed research that explored health care deficiencies in the Negev region of Israel. Dr. Knecht is also an associate clinical professional at Mount Sinai West in New York City where he still sees patients.*



## Master's Programs

All Master of Public Health programs are available in both hybrid and fully online formats

- MPH in Community Health
- MPH in Environmental and Occupational Health Sciences
- MPH in Epidemiology and Biostatistics
- MPH in Health Policy and Management
- MPH in Public Health Nutrition

All Master of Science programs are online only *except* the MS in Environmental and Occupational Health Sciences

- MS in Environmental and Occupational Health Sciences
- MS in Global and Migrant Health Policy
- MS in Health Communication for Social Change
- MS in Population Health Informatics

## Doctoral Programs

- PhD in Community Health and Health Policy
- PhD in Environmental and Planetary Health Sciences
- PhD in Epidemiology

## 4+1 Degree Programs

- Macaulay Honors College
- Medgar Evers
- Lehman College
- Queens College
- York College

## Certificate Programs

- Advanced Certificate in Public Health
- Advanced Certificate in Industrial Hygiene

## Other Programs and Specializations

- Specialization in Maternal, Child, Reproductive, and Sexual Health
- Nutrition and Dietetics Internship
- MPH Collaborative Degree with University of Alcalá
- MD-MPH Collaborative Degree with Albert Einstein College of Medicine
- MD-MPH Collaborative Degree with Mt. Sinai Institute for Family Health
- Preventive Medicine Residency and MPH in collaboration with the NYC Department of Health and Mental Hygiene
- Collaborative Degree and Continuing Education Program with Jacobi Medical Center

## CUNY SPH Foundation Board of Directors

### CHAIR

**Lyndon Haviland**  
President, Lyndon  
Haviland & Co. LLC

### VICE CHAIR

**Alfonso Chang**  
Co-founder and Managing  
Director, AC3 Group

### SECRETARY

**Margaret Crotty**  
President & CEO, JSI  
and World Education

### TREASURER

**Michael Meng**  
Co-founder and CEO,  
Stellar Health

### VOTING MEMBER EX-OFFICIO

**Ayman El-Mohandes**  
Dean, CUNY SPH

### NON-VOTING MEMBER, EX- OFFICIO

**Adam M. Doyno**  
Executive Director,  
CUNY SPH Foundation

### MEMBERS AT LARGE

**Gil Addo**  
Co-founder and  
CEO, RubiconMD

**Toyin Ajayi**  
Co-founder and  
Chief Health Officer,  
Cityblock Health

**Jordana Kier**  
Co-founder and  
Co-CEO, LOLA

**Daniel Knecht**  
Chief Clinical Innovation  
Officer, CVS Caremark

**Daniel Lowy**  
Founder and CEO,  
EMU Health

**Saqib Rahim**  
Strategy & Innovation,  
Immunology Data  
Science, Johnson  
& Johnson

**Nicole F. Roberts**  
Executive Director,  
Feed a Billion

**Ruth Wooden**  
Marketing and public  
policy communications  
professional

## CUNY SPH Dean's Advisory Council

### COUNCIL CHAIR

**Freida D. Foster**  
Vice Chair, NYS Workers'  
Compensation Board

### COUNCIL MEMBERSHIP

**Curtis Archer**  
President, Harlem  
Community Development  
Corporation

**Barbara Askins**  
President and CEO,  
125th Street Business  
Improvement District

**Joseph Awadje**  
University Student  
Life Manager, CUNY;  
Chief Liaison to the  
University Student Senate,

CUNY; Associate Director  
for External Relations  
& Compliance, CUNY  
Athletic Conference

**Oxiris Barbot**  
Senior Fellow for Public  
Health and Social Justice,  
JPB Foundation

**Susan J. Beane**  
Vice President and  
Executive Medical  
Director, Healthfirst

**Deneane Brown-Blackmon**  
Director, NYS Homes and  
Community Renewal,  
Upper Manhattan  
Borough Office

**Wellington Chen**  
Executive Director,  
Chinatown Partnership

**Andrea G. Cohen**  
Senior Vice President  
of Legal Affairs and  
General Counsel, NYC  
Health + Hospitals

**Maximo Gomez**  
Medical Correspondent,  
CBS 2

**Lyndon Haviland**  
President, Lyndon  
Haviland & Co. LLC

**Khary Lazarre-White**  
Executive Director  
& Co-founder, The  
Brotherhood/Sister Sol

**Fred Rich**  
Author; Of Counsel,  
Sullivan & Cromwell LLP

**Pat Wang**  
Chief Executive Officer,  
Health First NY

**Jennifer Walden Weprin**  
Executive Director,  
Queens County  
Farm Museum

### EX-OFFICIO MEMBER

**Duffie Cohen**  
University Executive  
Director of Academic  
Planning



# APPENDIX III | FACULTY

**Marilyn Auerbach**

Associate Professor,  
Community Health and  
Social Sciences; Associate  
Dean for Faculty Affairs

**Onur Baser**

Associate Professor, Health  
Policy and Management

**Luisa N. Borrell**

Distinguished Professor,  
Epidemiology and Biostatistics

**Nevin Cohen**

Associate Professor, Health  
Policy and Management;  
Director, CUNY Urban  
Food Policy Institute

**Spring Cooper**

Associate Professor,  
Community Health and  
Social Sciences

**Sergio Costa**

Lecturer, Community  
Health and Social Sciences;  
Interim Assistant Dean for  
Digital Learning, Marketing  
and Communications

**Kathleen Cravero**

Distinguished Lecturer, Health  
Policy and Management; Co-  
Director, Center for Immigrant,  
Refugee and Global Health

**Elizabeth Eastwood**

Associate Professor, Health  
Policy and Management

**Sasha Fleary**

Associate Professor,  
Community Health and  
Social Sciences

**Karen Florez**

Associate Professor,  
Environmental, Occupational,  
and Geospatial Health  
Sciences; Deputy Director,  
Center for Systems and  
Community Design

**Jose Florez-Arango**

Associate Professor,  
Epidemiology and Biostatistics

**Nicholas Freudenberg**

Distinguished Professor,  
Community Health and  
Social Sciences

**Ann Gaba**

Assistant Professor,  
Environmental,  
Occupational, and Geospatial  
HEalth Sciences

**Elizabeth Geltman**

Associate Professor, Health  
Policy and Management

**Renee Goodwin**

Professor, Epidemiology  
and Biostatistics

**Jean Grassman**

Associate Professor,  
Environmental,  
Occupational, and Geospatial  
Health Sciences

**Christian Grov**

Professor and Department  
Chair, Community Health and  
Social Sciences; Director,  
Development Core—Einstein-  
CUNY-Rockefeller Center  
for AIDS Research

**Honorio Guarino**

Research Associate  
Professor, Institute for  
Implementation Sciences  
in Population Health

**Sean Haley**

Assistant Professor, Health  
Policy and Management

**Terry Huang**

Professor and Department  
Chair, Health Policy and  
Management; Director,  
Center for Systems and  
Community Design; Co-  
Director, NYU-CUNY  
Prevention Research Center;  
Founder, Firefly Innovations

**Mustafa Hussein**

Assistant Professor, Health  
Policy and Management

**Glen Johnson**

Associate Professor,  
Environmental,  
Occupational, and Geospatial  
Health Sciences

**Heidi Jones**

Associate Professor, Epide-  
miology and Biostatistics;  
Director, Doctoral Program

**Ashish Joshi**

Professor, Epidemiology  
and Biostatistics; Senior  
Associate Dean of Students  
and Academic Affairs

**Ilias Kavouras**

Professor and Department  
Chair, Environmental,  
Occupational, and Geospatial  
Health Sciences

**Elizabeth Kelvin**

Associate Professor  
and Department Chair,  
Epidemiology and Biostatistics

**Michele Kiely**

Professor, Epidemiology  
and Biostatistics; Associate  
Dean for Research

**Susan Klitzman**

Professor, Environmental,  
Occupational, and  
Geospatial Health Sciences;  
Senior Associate Dean  
for Administration

**Bruce Y. Lee**

Professor, Health Policy  
and Management;  
Executive Director, Public  
Health Computational  
and Operations Research;  
Executive Director, Center for  
Advanced Technology and  
Communication in Health

**Sheng Li**

Assistant Professor,  
Epidemiology and Biostatistics

**Meredith Manze**

Associate Professor,  
Community Health and  
Social Sciences

**Andrew Maroko**

Associate Professor, Environ-  
mental, Occupational, and  
Geospatial Health Sciences

**Pedro Mateu-Gelabert**

Associate Professor,  
Community Health and  
Social Sciences

**Suzanne McDermott**

Professor, Environmental,  
Occupational, and Geospatial  
Health Sciences

**Denis Nash**

Distinguished Professor,  
Epidemiology and Biosta-  
tistics; Executive Director,  
Institute for Implementation  
Science in Population Health

**Victoria Ngo**

Associate Professor,  
Community Health and Social  
Sciences; Director, Center for  
Innovation in Mental Health

**P. Christopher Palmedo**

Clinical Professor, Community  
Health and Social Sciences

**Brian Pavilonis**

Associate Professor, Environ-  
mental, Occupational, and  
Geospatial Health Sciences

**Stacey Plichta**

Professor, Health Policy  
and Management; Director,  
Doctoral Program

**Scott Ratzan**

Distinguished Lecturer,  
Community Health and  
Social Sciences; Executive  
Director, CONVINC USA

**Lynn Roberts**

Assistant Professor,  
Community Health and  
Social Sciences; Associate  
Dean for Student Affairs  
and Alumni Relations

**Diana Romero**

Professor, Community  
Health and Social Sciences

## FACULTY (CONT.)

**Nasim Sabounchi**

Associate Professor, Health  
Policy and Management

**Marie Sillice**

Research Assistant Professor,  
Center for Systems and  
Community Design

**Mary Schooling**

Professor, Environmental,  
Occupational, and Geospatial  
Health Sciences

**Zach Shahn**

Assistant Professor,  
Epidemiology and Biostatistics

**James Sherry**

Clinical Professor, Health  
Policy and Management; Co-  
Director, Center for Immigrant,  
Refugee and Global Health

**Ghada Soliman**

Associate Professor,  
Environmental,  
Occupational, and Geospatial  
Health Sciences  
Director, Doctoral Program

**Chloe Teasdale**

Assistant Professor,  
Epidemiology and Biostatistics

**Emma Tsui**

Associate Professor,  
Community Health and  
Social Sciences

**Levi Waldron**

Associate Professor,  
Epidemiology and Biostatistics

**Karmen Williams**

Assistant Professor, Health  
Policy and Management

**Katarzyna Wyka**

Associate Professor,  
Epidemiology and Biostatistics

**Naomi Zewde**

Assistant Professor, Health  
Policy and Management

**Hongbin Zhang**

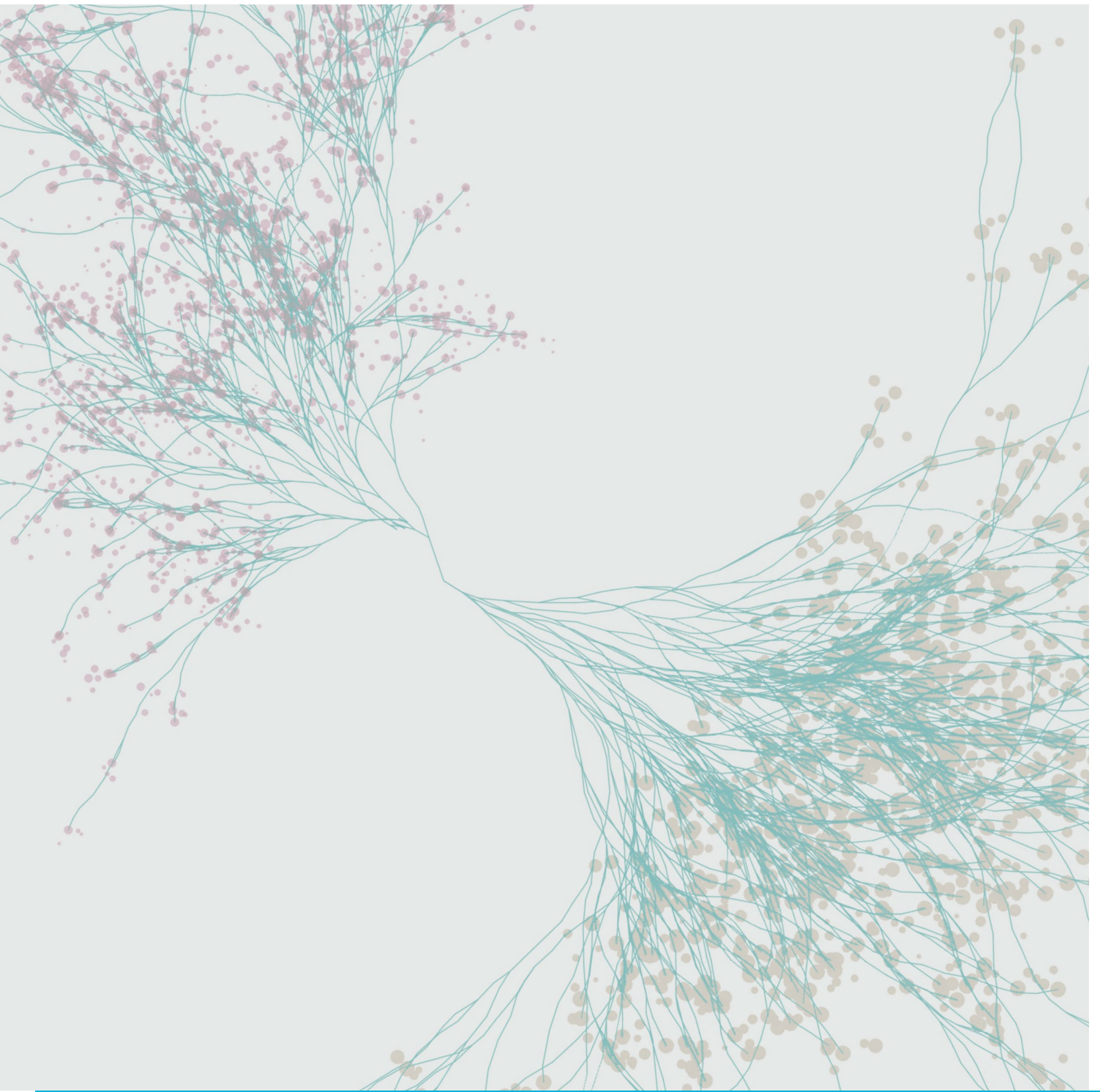
Assistant Professor,  
Epidemiology and Biostatistics



Copyright © 2023  
CUNY Graduate School  
of Public Health & Health Policy

All Rights Reserved

55 West 125th Street  
New York, NY 10027  
[sph.cuny.edu](http://sph.cuny.edu)



ADVANCING IMPROVED HEALTH AND SOCIAL JUSTICE FOR ALL

**CUNY**SPH

**CU  
NY** THE GREATEST  
URBAN UNIVERSITY  
IN THE WORLD

[sph.cuny.edu](http://sph.cuny.edu)