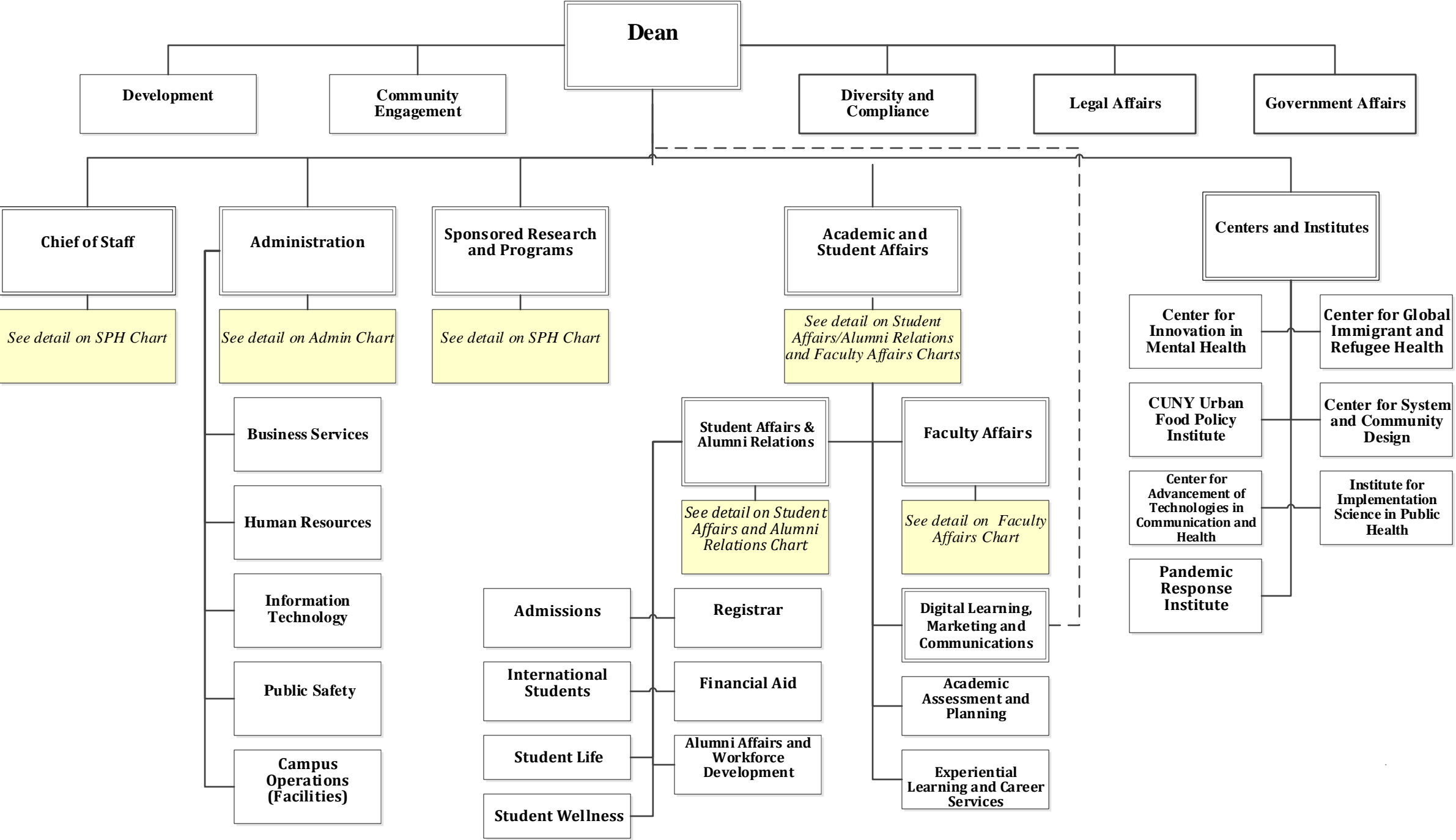


CUNY Graduate School of Public Health and Health Policy - Table of Organization – 11/1/2023



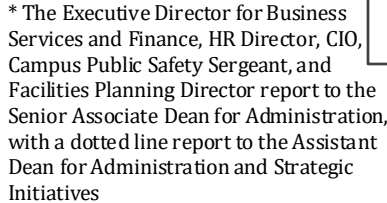
```
graph TD; CF[Cara Flynn  
Development Manager (HEA)] --- J1(( )); BL[Brianna Lee  
Development Manager (HEA)] --- J1; J1 --- J2(( )); J2 --- DL[Deborah Levine  
Community Outreach Program Director (HEO)]; J2 --- AD[Adam Doyno  
Development Corp & Fdn Relns Director (HEO)];
```

Cara Flynn
Development Manager (HEA)

Deborah Levine
Community Outreach Program Director (HEO)

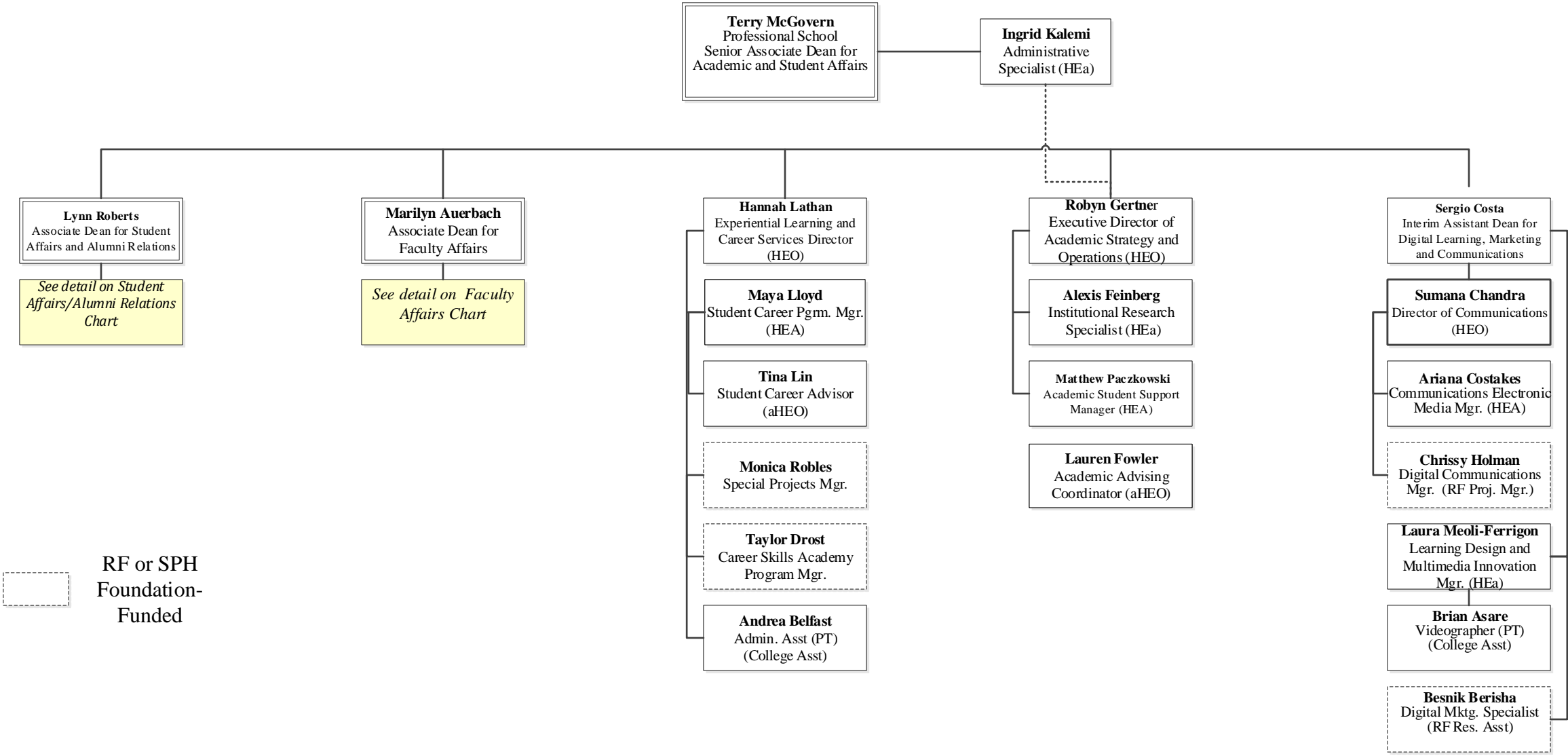
Brianna Lee
Development Manager (HEA)

Adam Doyno
Development Corp & Fdn Relns Director (HEO)

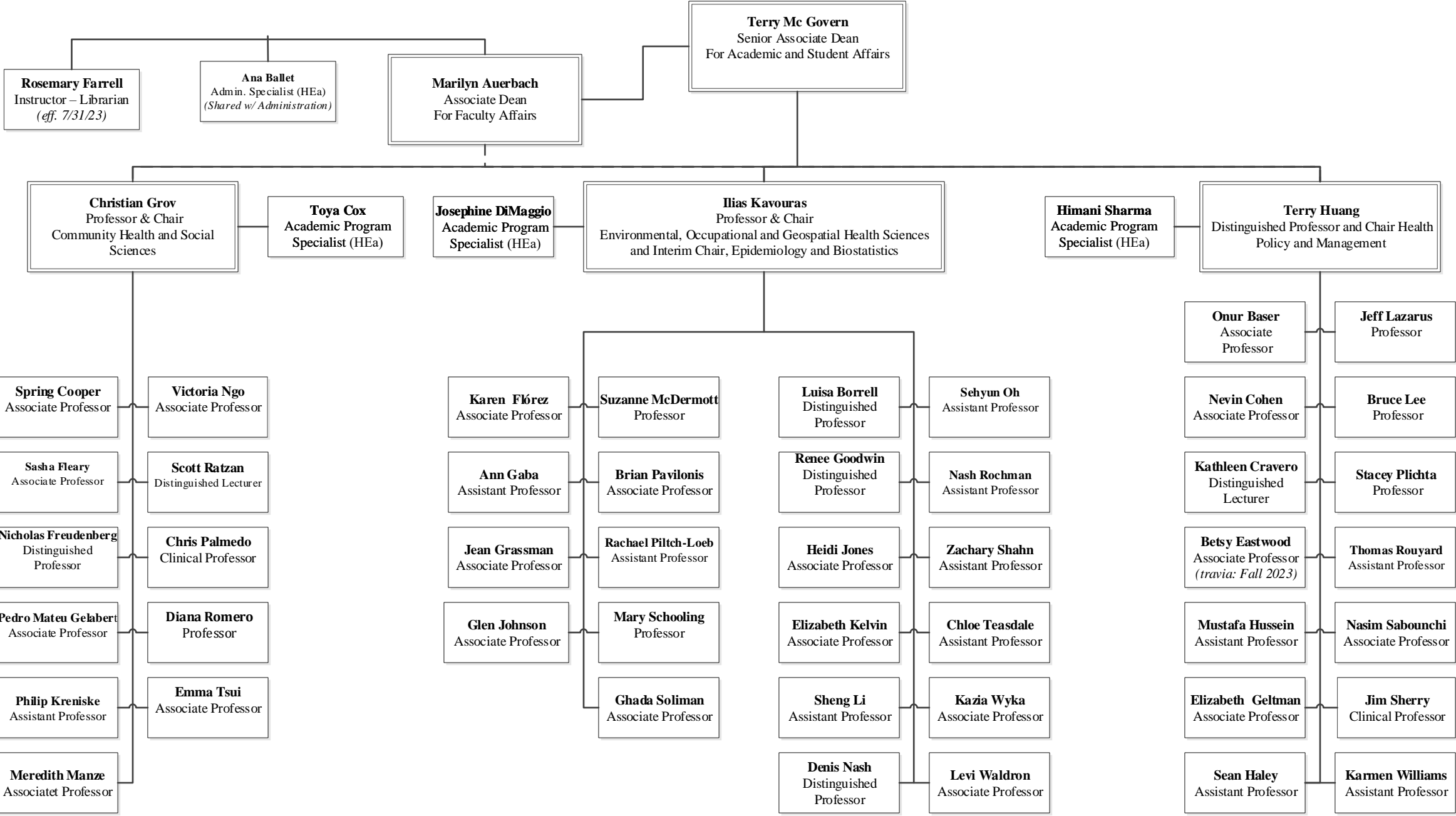


Danielle Greene, COO**
Bruce Lee,
Technical Director
Pandemic Response
Institute

CUNY Graduate School of Public Health and Health Policy
Academic Affairs
Table of Organization
11/1/2023

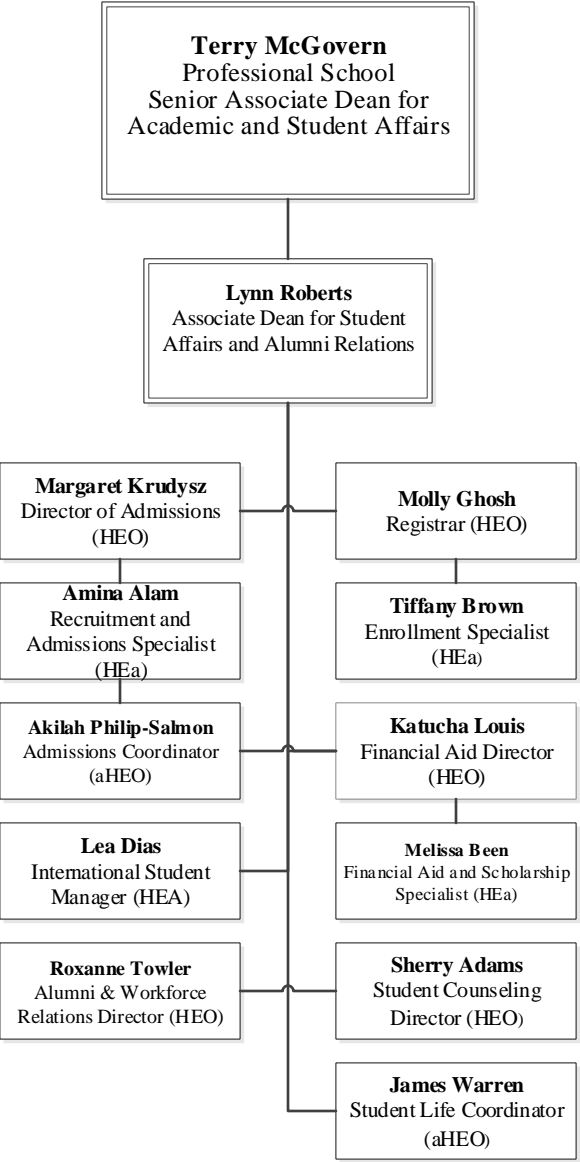


CUNY Graduate School of Public Health and Health Policy
Faculty Affairs - Table of Organization – FT Faculty and Staff
11/1/2023

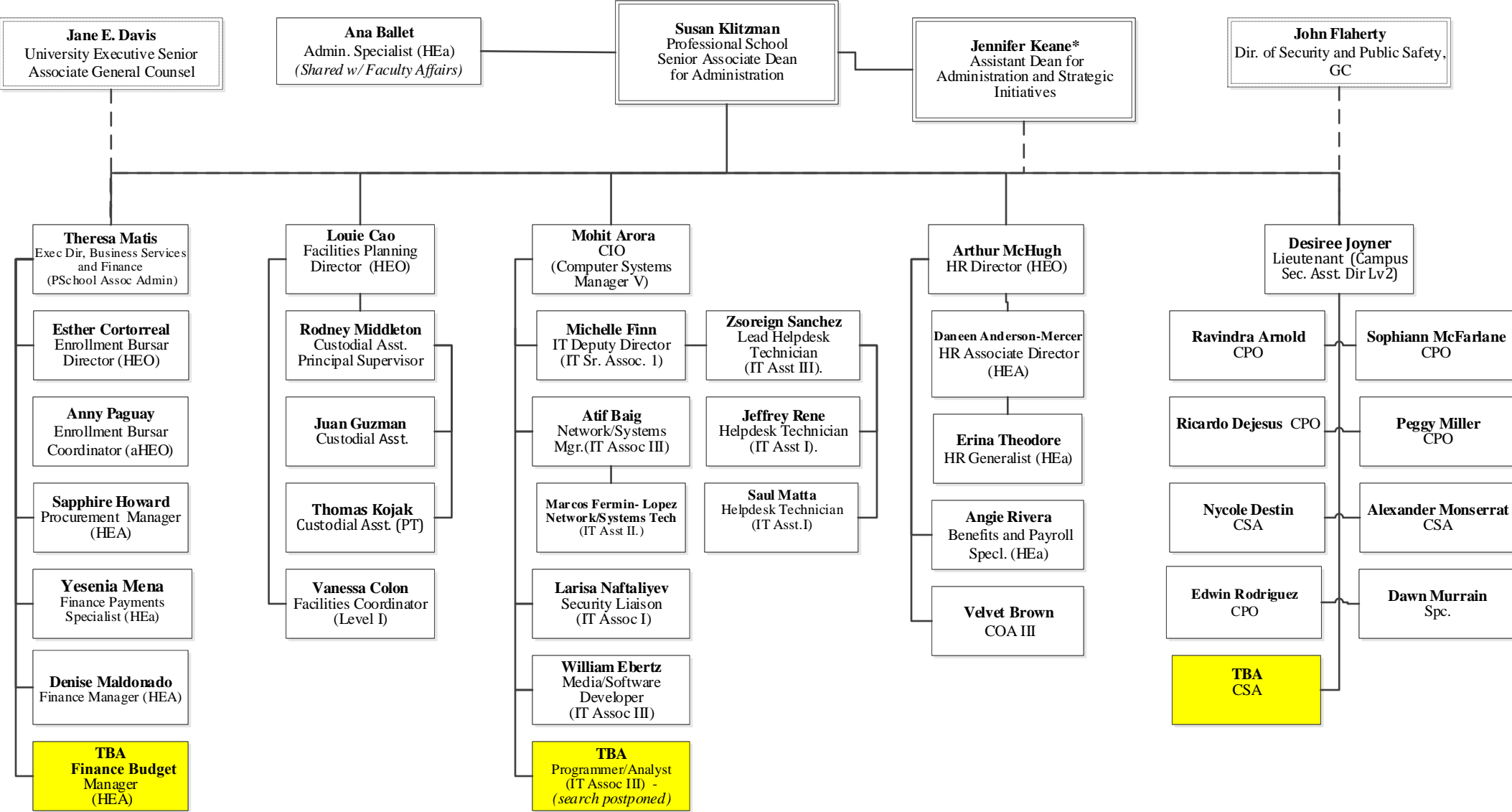


*Excludes Research Faculty who are not affiliated with Academic Departments

CUNY Graduate School of Public Health and Health Policy
Student Affairs and Alumni Relations
Table of Organization – FT Faculty and Staff
11/1/ 2023



CUNY Graduate School of Public Health and Health Policy
Administrative Services
Table of Organization – FT Staff
11/1/2023



* The Executive Director for Business Services and Finance, HR Director, CIO, Campus Public Safety Sergeant, and Facilities Planning Director report to the Senior Associate Dean for Administration, with a dotted line report to the Assistant Dean for Administration and Strategic Initiatives

CUNY Graduate School of Public Health and Health Policy
Centers and Institutes – Table of Organization –
FT Tax-Levy Faculty and Staff
11/1/2023

